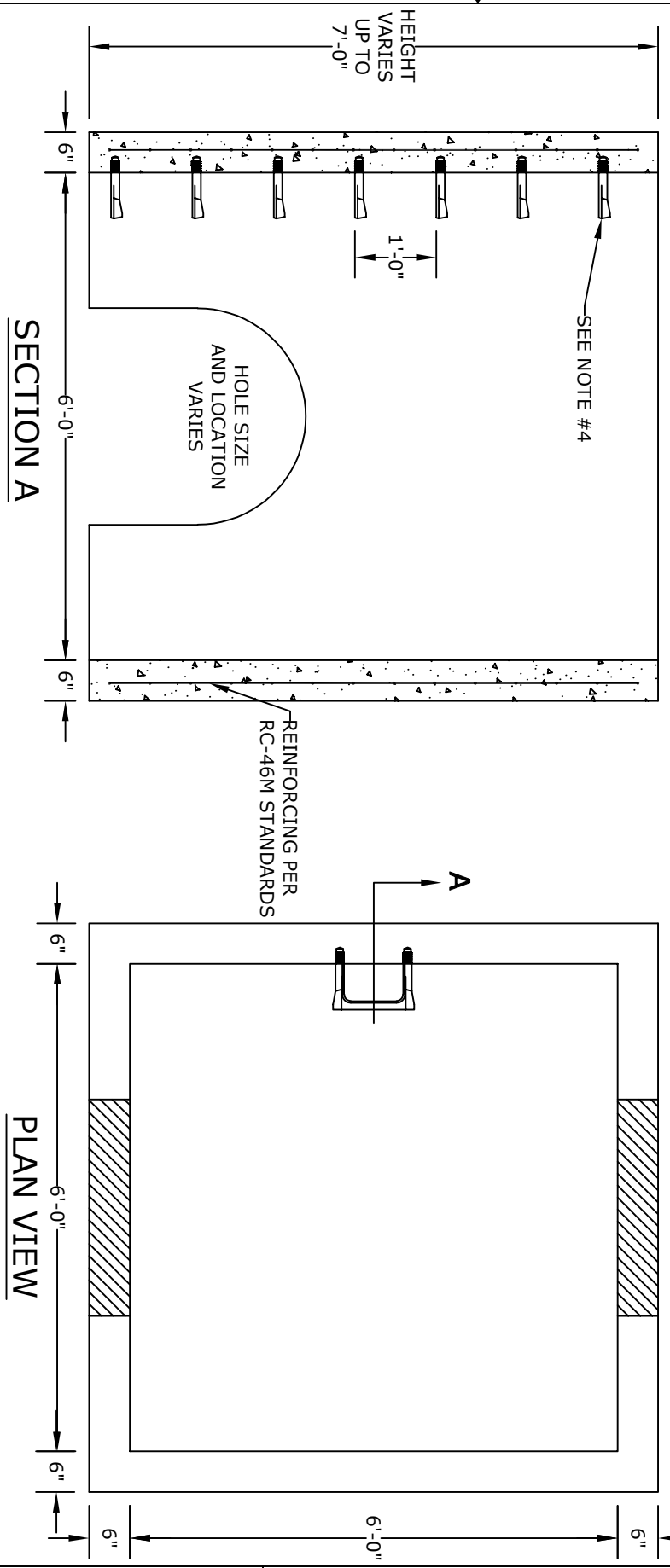


- NOTES**
1. CONCRETE - 4000 psi, AIR ENTRAINED
 2. REINFORCING STEEL - GRADE 60, ASTM A-615 - REINFORCING BASED ON PENNDOT RC-46M
 3. WELDED WIRE FABRIC - ASTM-A185
 4. LADDER RUNGS - COPOLYMER POLYPROPYLENE PLASTIC w/1/2" REBAR, GRADE 60 WHEN NEEDED
 5. MATERIAL AND CONSTRUCTION SHALL COMPLY WITH PENNDOT PUB. 408, 72, & RC46M
 6. LOCATIONS OF PIPE OPENINGS AS REQUIRED
 7. ALL MATERIAL USED MADE IN THE USA



ALTOMARE PRECAST, INC.
 4300 Wissahickon Ave.
 Philadelphia, PA 19129
 Ph: 215-225-8800 Fax: 215-225-8900

TITLE:
 6'x6'
 Doghouse Riser/Top
 w/ 6" Walls

PROJECT:
CONTR:
DATE: