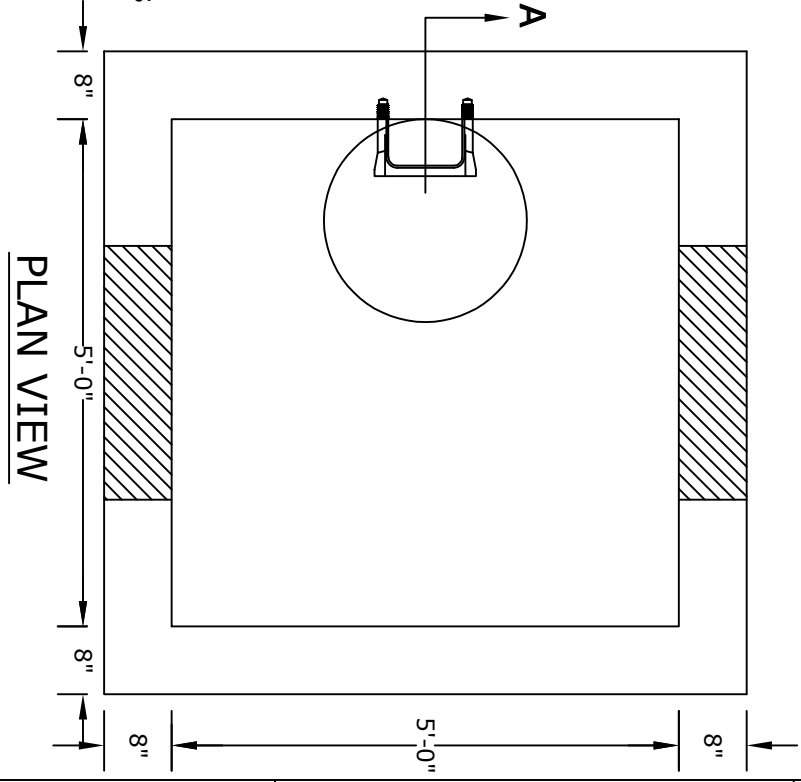
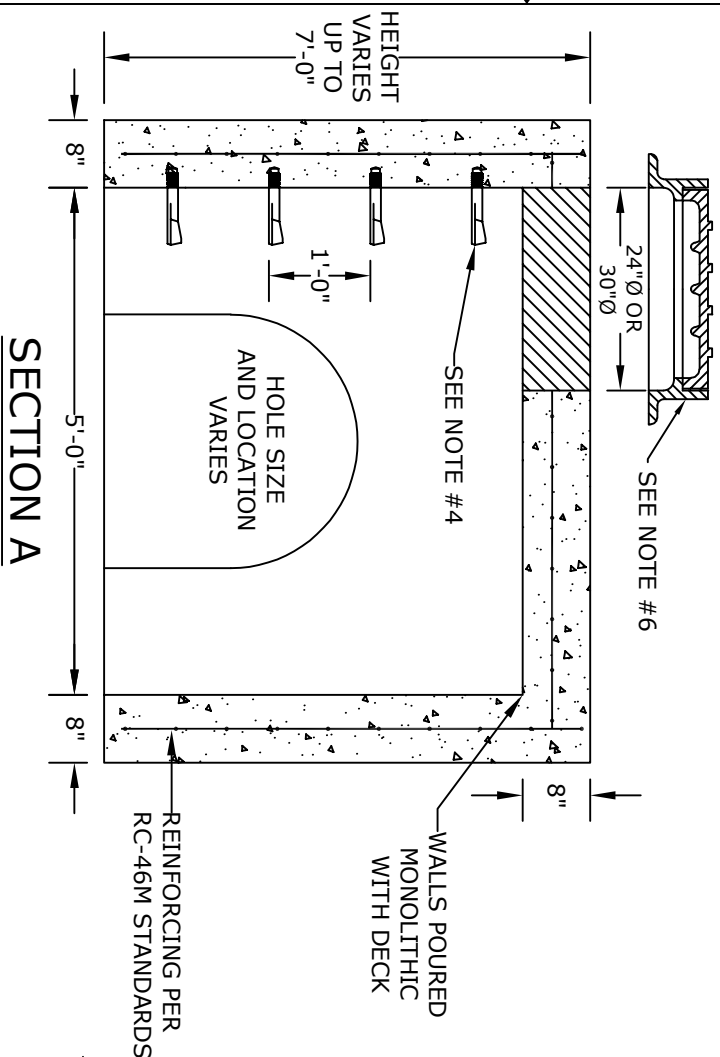


NOTES

1. CONCRETE- 4000 psi, AIR ENTRAINED
2. REINFORCING STEEL- GRADE 60, ASTM A-615 - REINFORCING BASED ON PENNDOT RC-46M
3. WELDED WIRE FABRIC- ASTM-A185
4. LADDER RUNGS- COPOLYMER POLYPROPYLENE PLASTIC w/1/2" REBAR, GRADE 60 WHEN NEEDED
5. MATERIAL AND CONSTRUCTION SHALL COMPLY WITH PENNDOT PUB. 408, 72, & RC46M
6. FRAME/COVER - SEE ACCOMPANYING SPEC. SHEETS
7. LOCATIONS OF PIPE OPENINGS AS REQUIRED
8. ALL MATERIAL USED MADE IN THE USA



PROJECT:
CONTR:
DATE:

TITLE:
**5'x5' Doghouse
w/ 8" Walls**

ALTOMARE PRECAST, INC.
4300 Wissahickon Ave.
Philadelphia, PA 19129
Ph: 215-225-8800 Fax: 215-225-8900