

FRONT VIEW

SIDE VIEW

NOMINAL SIZING INFORMATION				
PRODUCT NAME	HEIGHT (H)	WIDTH (W)	DEPTH (D)	OPENING AREA
STKS-18	32.84"	23"	11.84"	1.063 sf
STKS-24	39.31"	37"	11.84"	1.906 sf
STKS-30	45.15"	40"	15.9"	2.907 sf
STKS-18R	32.97"	23.05"	10.55"	1.068 sf
STKS-24R	39.20"	34.36"	7.626"	1.872 sf

**NOTES:**

- a. REFERENCE CURRENT INSTALLATION INSTRUCTIONS FOR PROPER INSTALLATION PRACTICES.

REV.	DATE	RECORD OF CHANGES	BY	APPRV.
B	1/5/15	ROUND SHIELD ADDED TO TABLE AND QUANTITIES UPDATED	CGB	
A	9/9/13	INITIAL RELEASE	JKB	



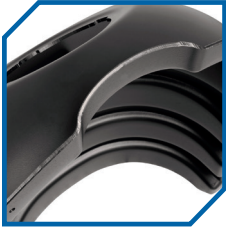
610 Morgantown Road  
 Reading, PA 19611 U.S.A.  
 Phone: (610) 374-5109  
 Fax: (610) 376-6022  
 www.brentwoodindustries.com

Project Name		PRODUCT DETAIL	
Title			
<b>STORMTANK SHIELD</b>			
Drawn By		Date	
J.BAILEY		9/9/13	
Drawing No.		Sheet	
STKS-001-00		1 of 1	
		Scale	
		NTS	

This is the property of Brentwood Industries, Inc. It may not be reproduced or used for any purpose other than those expressly authorized by Brentwood Industries. It shall be returned immediately upon request of Brentwood Industries.

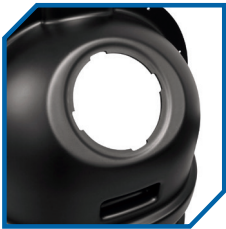
## THE SHIELD

The StormTank Shield provides a low-cost solution for stormwater pretreatment by reducing pollutant discharge through gross sediment removal and oil/water separation. Once the Shield is installed, any contaminants with a density less than water are prevented from exiting the inlet. This improves treatment efficiency by increasing the flow length and time of concentration vital to particle settling.



### ANTI-SIPHON VENT

Vortexes and siphoning are prevented by the built-in vent, which requires no additional parts or connections.



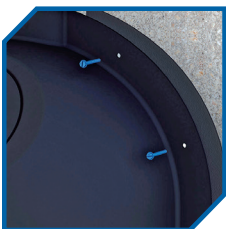
### ACCESS PORT

The access port and slim profile simplify the cleaning process and ensure that nothing obstructs the discharge.



### HAND GRIP

The built-in hand grip makes the Shield easy to handle during the installation process.



### EASY INSTALLATION

Pre-drilled mounting holes allow the Shield to be easily fastened over the outlet pipe. Conveniently available in 18-, 24-, and 30-inch size



## ADDITIONAL STORMTANK PRODUCTS



### THE PACK

The Stormtank Pack is the light-duty solution for subsurface stormwater management.

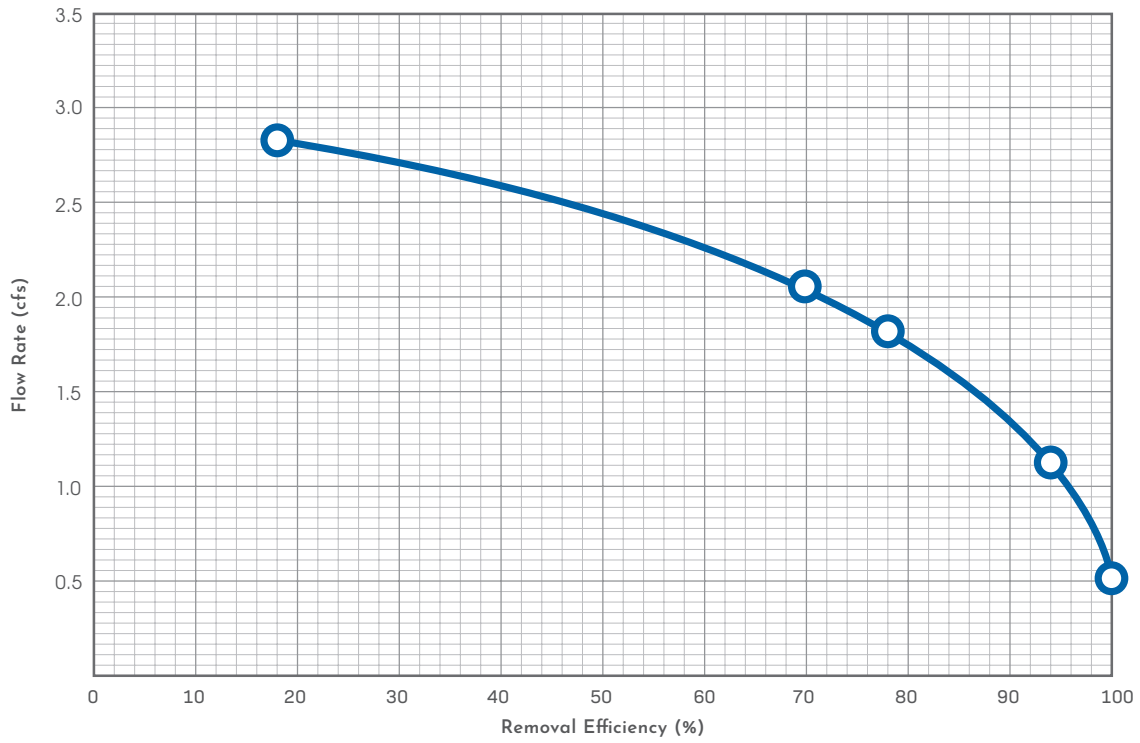


### THE MODULE

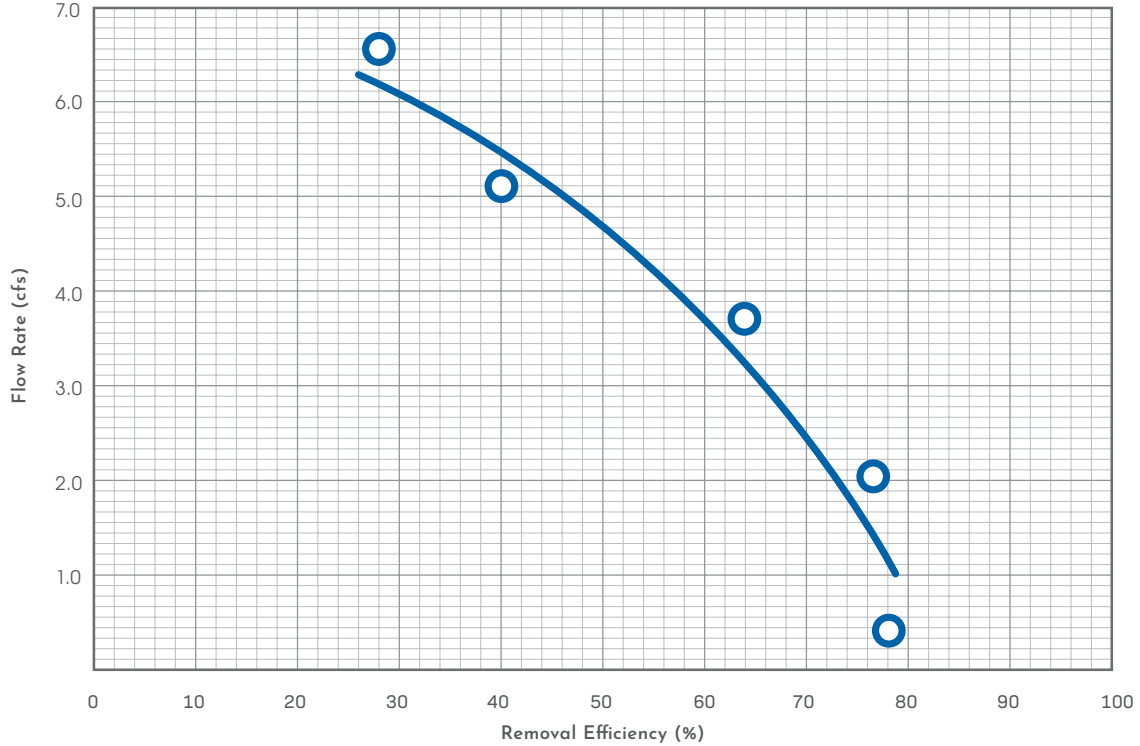
The StormTank Module is a subsurface stormwater storage unit load-rated for use under surfaces such as parking lots, athletic fields, and parks.

# REMOVAL EFFICIENCY CURVES

STKS-18, 4'x2' Tank, 1/16" Particles @ 200 mg/L



STKS-18, 4'x4' Tank, 1/16" Particles @ 200 mg/L



STORMTANK.COM  
info@stormtank.com  
+1.610.374.5109

# STORMTANK<sup>®</sup> Shield

## Design Guidelines

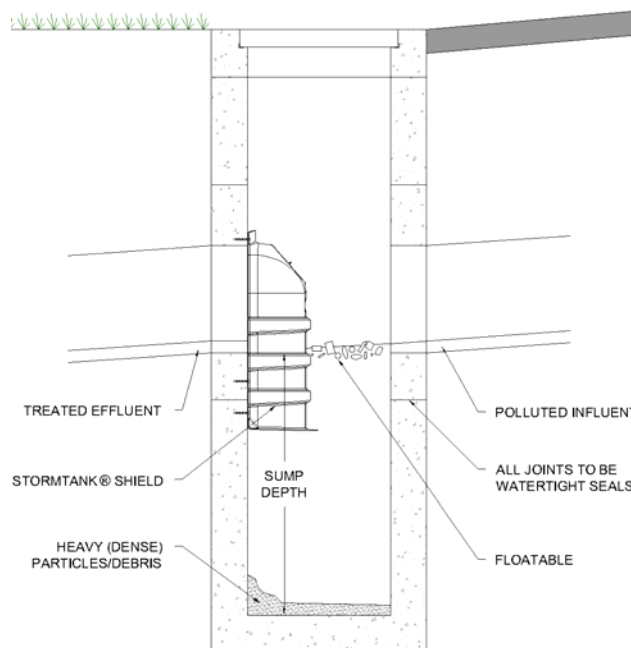
REV. 1

8/13/13

The **StormTank<sup>®</sup> Shield** is, a stormwater treatment device, intended to improve the treatment efficiency of sumped inlet water quality BMP's. By installing a **StormTank<sup>®</sup> Shield** in any sumped inlet, debris and contaminants with a density less than water are prevented from exiting the inlet during the first flush of runoff. This increases the treatment efficiency of the BMP, while also increasing the flow length and time of concentration that is vital to particle settling.

### **StormTank<sup>®</sup> Shield Design Guidelines:**

1. **StormTank<sup>®</sup> Shield** hood shall enclose the entire opening area of the outlet pipe.
2. **StormTank<sup>®</sup> Shield** sizing should be selected to ensure flow capacity is not reduced beyond the capacity of the upslope system (tailwater condition).
3. The stormwater structure, to contain a **StormTank<sup>®</sup> Shield**, shall be sized to contain a minimum 36" deep internal sump (for increased treatment, the sump should be a minimum 2.5x pipe diameter).
4. The structure shall be installed to ensure a watertight seal at all joints and penetrations. It is recommended that all seals be made with a gasket or mastic (or equal).



Brentwood Industries, Inc.  
610 Morgantown Road, Reading, PA 19611, USA  
Brentwoodindustries.com

Phone: 610.374.5109

Fax: 610.376.6022