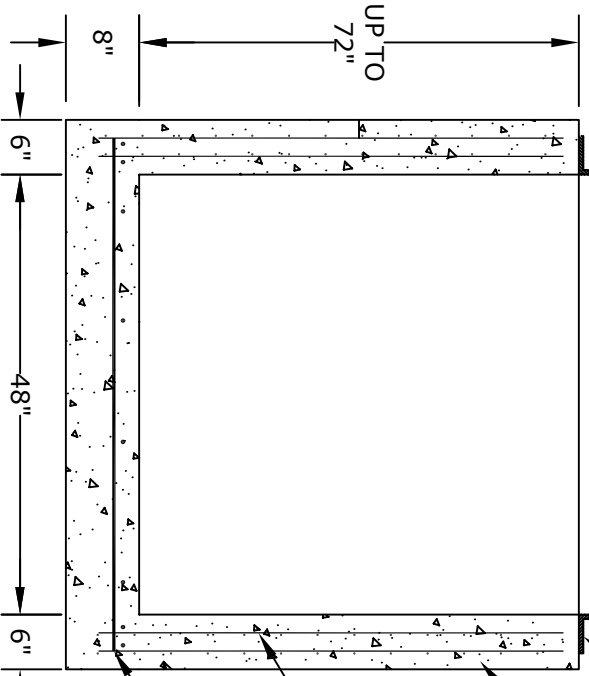
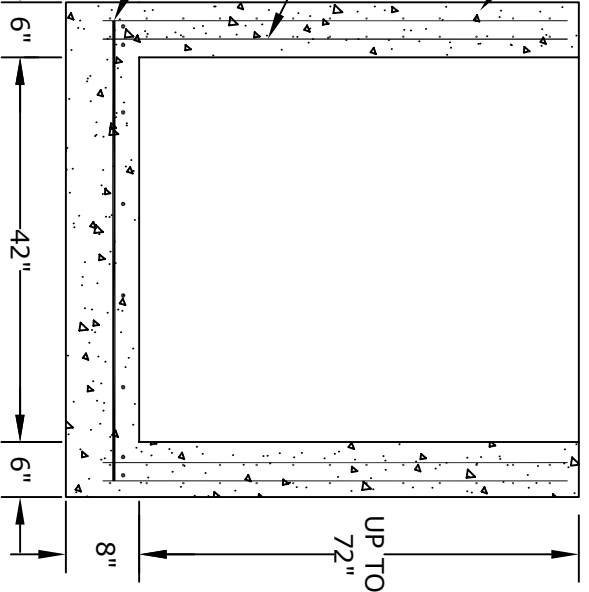


**PLAN VIEW**

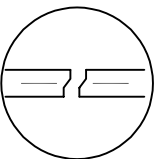
SEE NOTE #6  
 FULL BED OF LEVEL GROUT (1/2" MAX)



**SECTION A**



**SECTION B**



**JOINT DETAIL**  
 (WHEN NEEDED)

**NOTES**

1. CONCRETE - 4000psi, AIR ENTRAINED
2. REINFORCING  
 STEEL - GRADE 60, ASTM A-615  
 WWF 4X4 W4&W4 - ASTM A-185
3. LADDER RUNGS - COPOLYMER POLYPROPYLENE  
 PLASTIC w/1/2" REBAR, GRADE 60
4. H-25 LOADING
5. LOCATIONS OF PIPE OPENINGS AS REQUIRED
6. FRAME AND GRATE -  
 SEE ACCOMPANYING SPEC. SHEET
7. ALL MATERIAL USED MADE IN THE USA

**ALTOMARE PRECAST, INC.**  
 4300 Wissahickon Ave.  
 Philadelphia, PA 19129  
 Ph: 215-225-8800 Fax: 215-225-8900

**TITLE:**  
 New Jersey  
 Type E Inlet

PROJECT:
CONTR:
DATE: