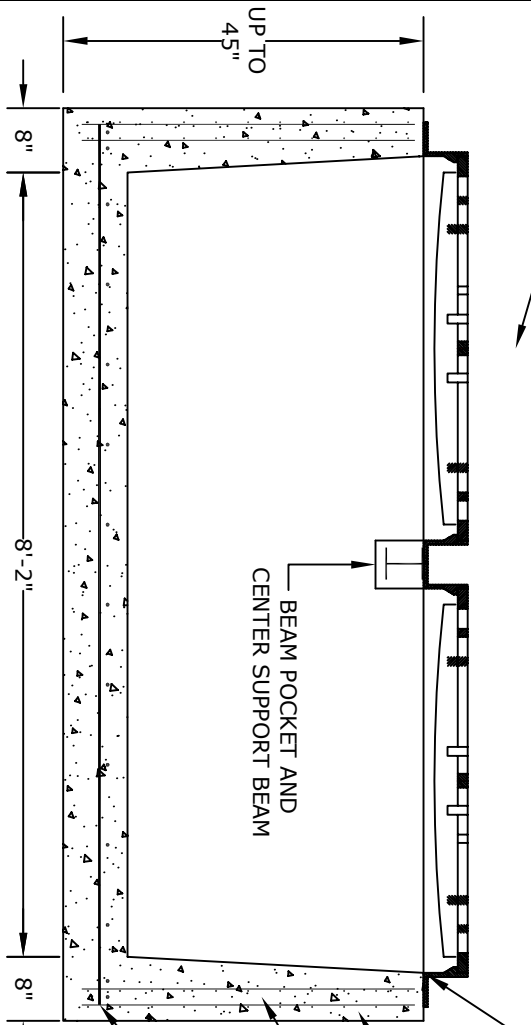
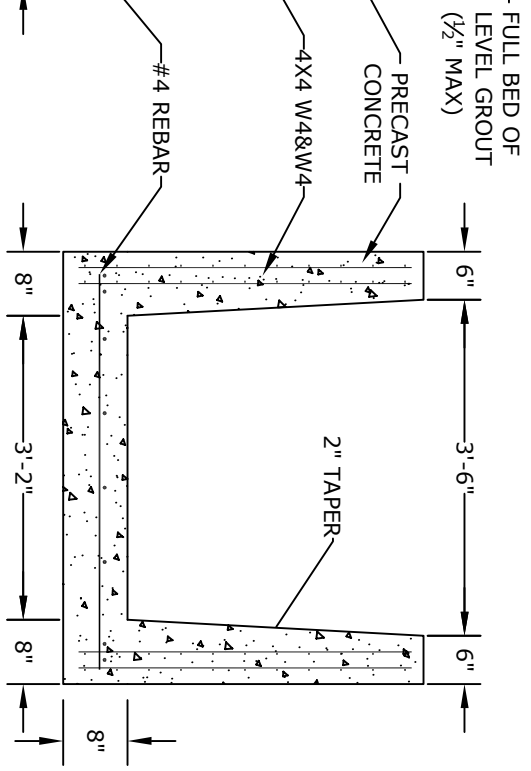


**PLAN VIEW**



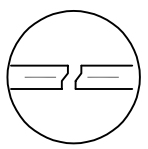
**SECTION A**



**SECTION B**

**NOTES**

1. CONCRETE - 4000psi, AIR ENTRAINED
2. REINFORCING STEEL - GRADE 60, ASTM A-615
3. LADDER RUNGS - COPOLYMER POLYPROPYLENE PLASTIC w/1/2" REBAR, GRADE 60
4. H-25 LOADING
5. LOCATIONS OF PIPE OPENINGS AS REQUIRED
6. FRAME AND GRATE - SEE ACCOMPANYING SPEC. SHEET
7. ALL MATERIAL USED MADE IN THE USA



**JOINT DETAIL  
(WHEN NEEDED)**

**ALTOMARE PRECAST, INC.**  
 4300 Wissahickon Ave.  
 Philadelphia, PA 19129  
 Ph: 215-225-8800 Fax: 215-225-8900

**TITLE:**  
 New Jersey  
 Type Double E Inlet

**PROJECT:**  
**CONTR:**  
**DATE:**