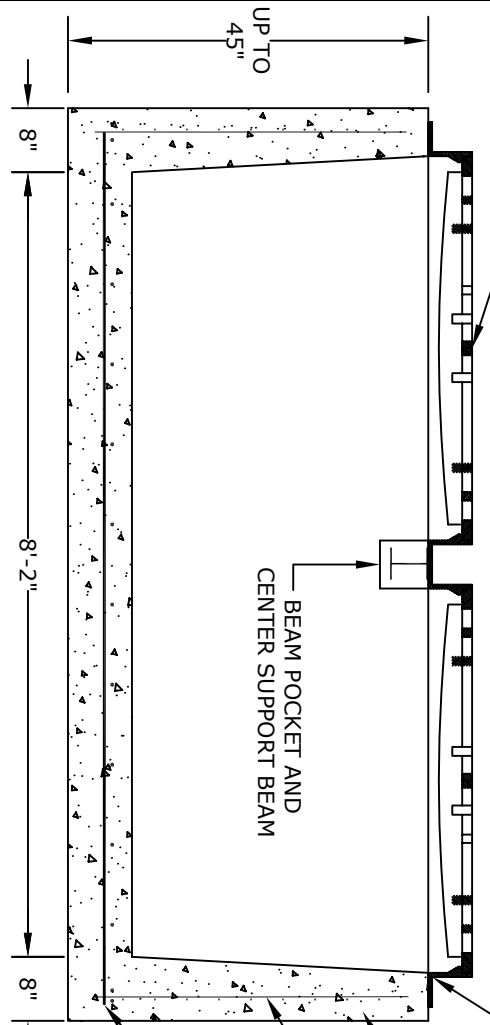
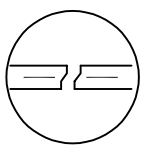
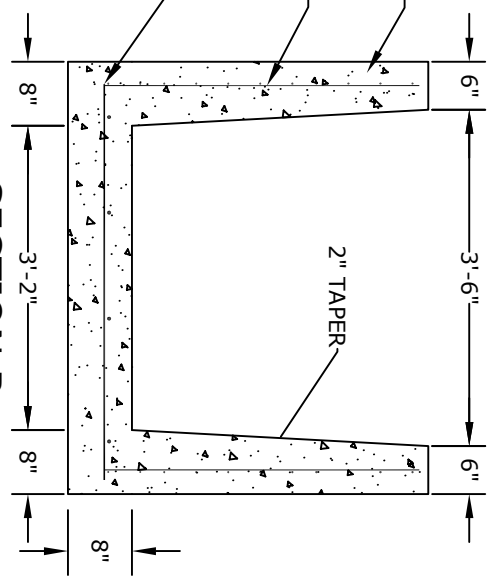


**PLAN VIEW**

**SECTION A**



**SECTION B**



**JOINT DETAIL**  
(WHEN NEEDED)

- NOTES**
1. CONCRETE- 4000psi, AIR ENTRAINED
  2. REINFORCING STEEL- GRADE 60, ASTM A-615
  3. WWF 4X4 W4&W4- ASTM A-185
  4. LADDER RUNGS- COPOLYMER POLYPROPYLENE PLASTIC w/1/2" REBAR, GRADE 60
  5. H-20 LOADING
  6. LOCATIONS OF PIPE OPENINGS AS REQUIRED
  7. FRAME AND GRATE- SEE ACCOMPANYING SPEC. SHEET
  7. ALL MATERIAL USED MADE IN THE USA

**ALTOMARE PRECAST, INC.**  
 4300 Wissahickon Ave.  
 Philadelphia, PA 19129  
 Ph: 215-225-8800 Fax: 215-225-8900

**TITLE:**  
 New Jersey  
 Type Double E Inlet

**PROJECT:**  
**CONTR:**  
**DATE:**