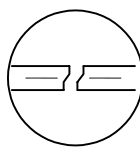
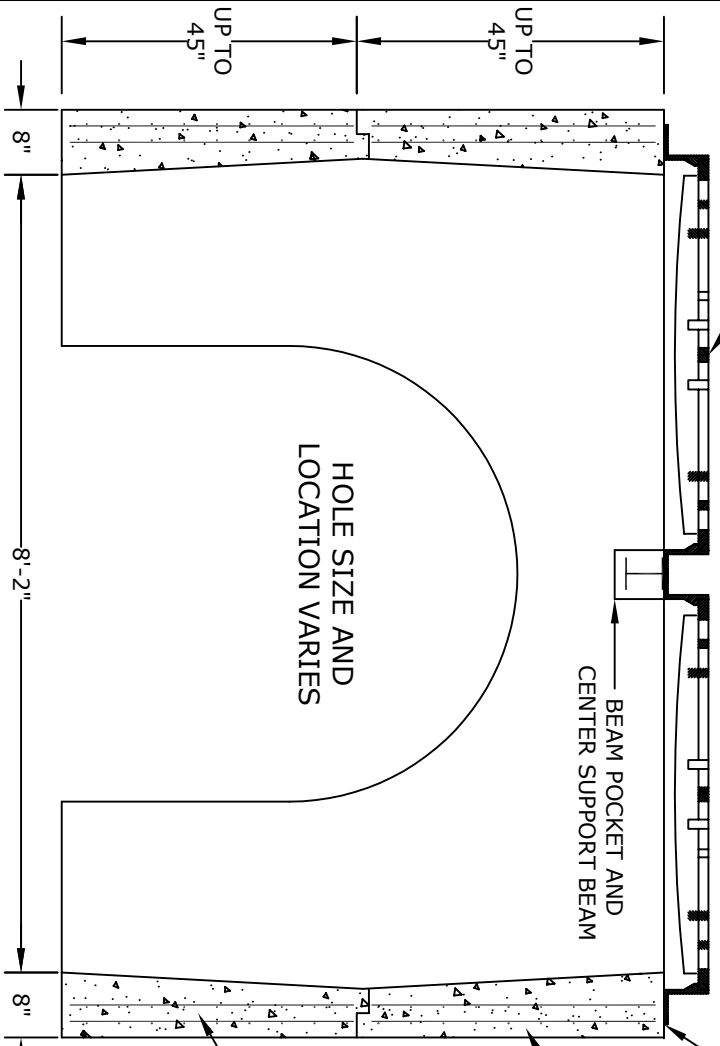


PLAN VIEW

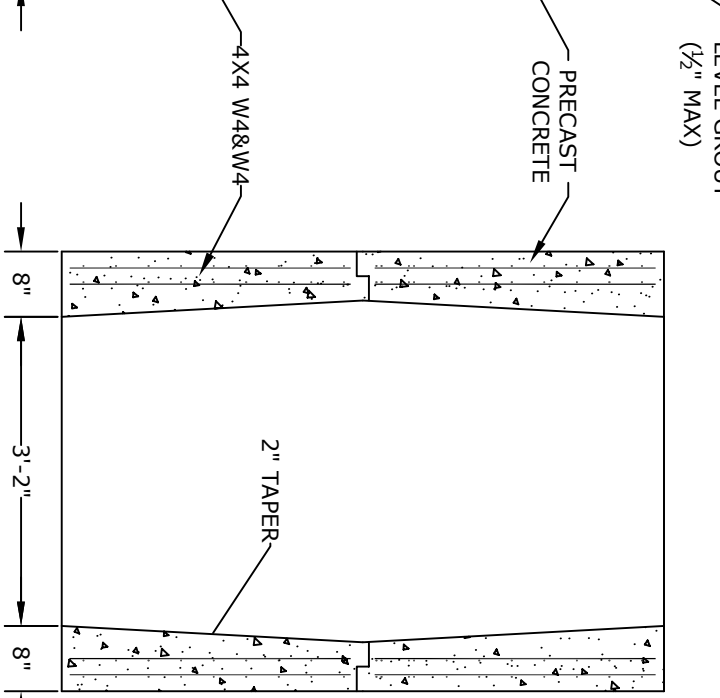
- NOTES**
1. CONCRETE - 4000psi, AIR ENTRAINED
 2. REINFORCING - WWF 4X4 W4&W4 - ASTM A-185
 3. LADDER RUNGS - COPOLYMER POLYPROPYLENE PLASTIC w/1/2" REBAR, GRADE 60
 4. H-25 LOADING
 5. LOCATIONS OF PIPE OPENINGS AS REQUIRED
 6. FRAME AND GRATE - SEE ACCOMPANYING SPEC. SHEET
 7. ALL MATERIAL USED MADE IN THE USA



**JOINT DETAIL
(WHEN NEEDED)**



SECTION A



SECTION B

HOLE SIZE AND LOCATION VARIES

ALTOMARE PRECAST, INC.
 4300 Wissahickon Ave.
 Philadelphia, PA 19129
 Ph: 215-225-8800 Fax: 215-225-8900

**TITLE: New Jersey
 Type Double E
 Doghouse**

PROJECT:
 CONTR:
 DATE: