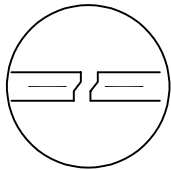


PLAN VIEW

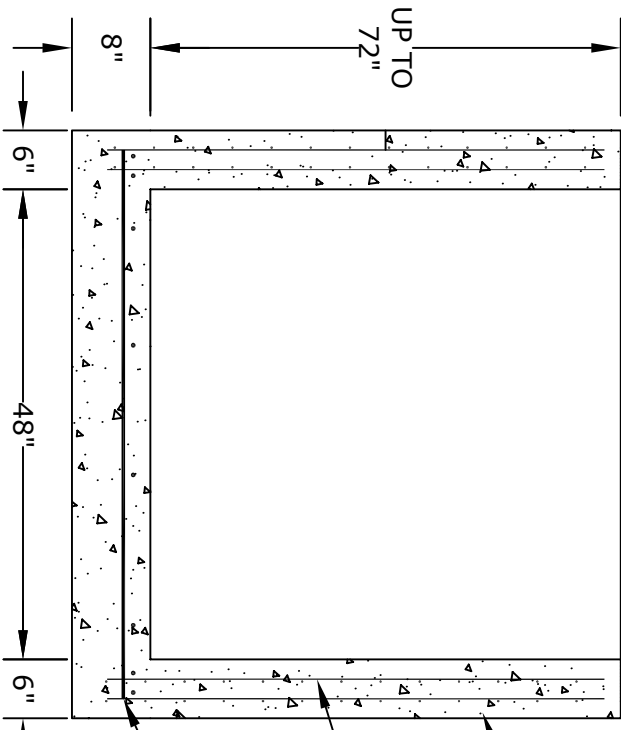
SEE NOTE #6

FULL BED OF LEVEL GROUT (1/2" MAX)

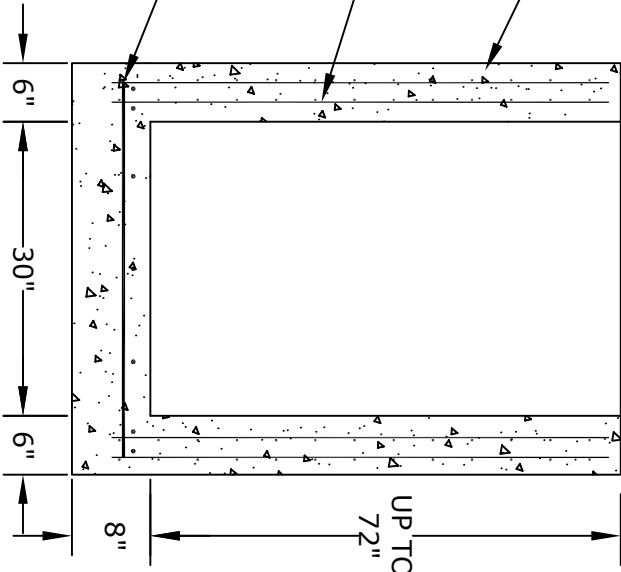


JOINT DETAIL (WHEN NEEDED)

- NOTES**
1. CONCRETE - 4000psi, AIR ENTRAINED
 2. REINFORCING STEEL - GRADE 60, ASTM A-615
 3. WWF 4X4 W4&W4 - ASTM A-185
 4. LADDER RUNGS - COPOLYMER POLYPROPYLENE PLASTIC w/1/2" REBAR, GRADE 60
 5. H-25 LOADING
 6. LOCATIONS OF PIPE OPENINGS AS REQUIRED
 7. FRAME AND GRATE - SEE ACCOMPANYING SPEC. SHEET
 7. ALL MATERIAL USED MADE IN THE USA



SECTION A



SECTION B

ALTOMARE PRECAST, INC.
 4300 Wissahickon Ave.
 Philadelphia, PA 19129
 Ph: 215-225-8800 Fax: 215-225-8900

TITLE:
 New Jersey
 Type D Inlet

PROJECT:
CONTR:
DATE: