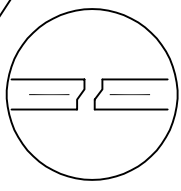


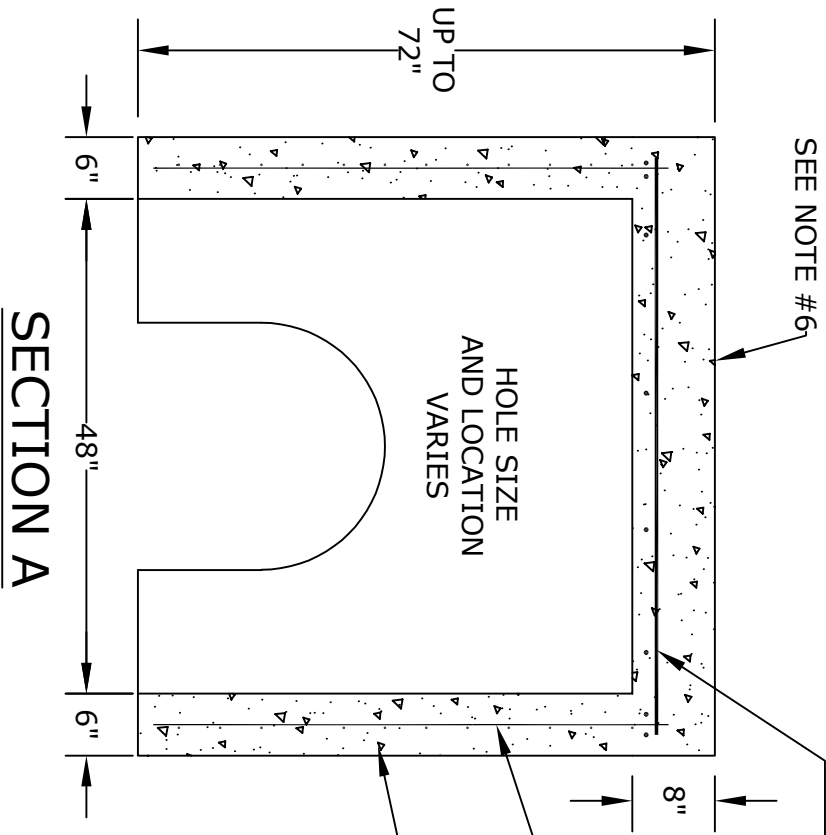
**PLAN VIEW**

**NOTES**

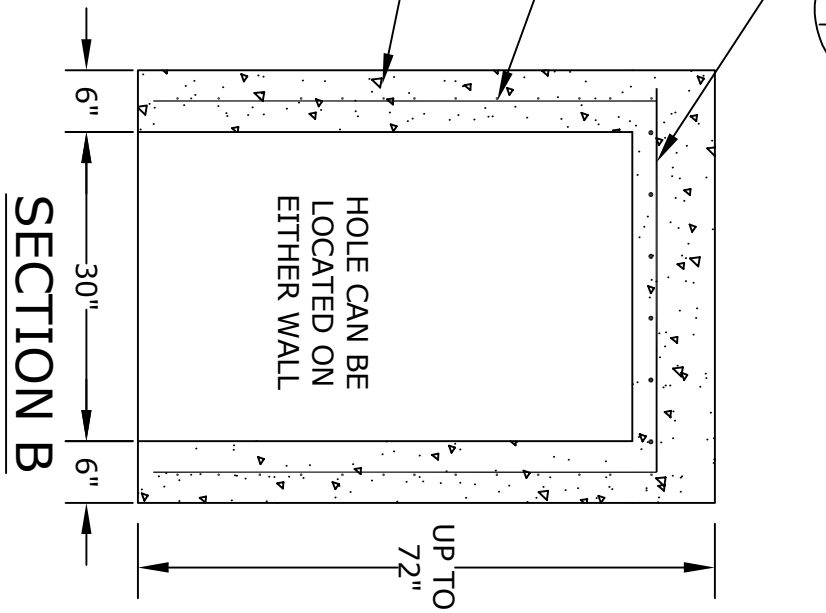
1. CONCRETE - 4000psi, AIR ENTRAINED
2. REINFORCING  
STEEL - GRADE 60, ASTM A-615  
WWF 4X4 W4&W4 - ASTM A-185
3. LADDER RUNGS - COPOLYMER POLYPROPYLENE  
PLASTIC w/1/2" REBAR, GRADE 60
4. H-20 LOADING
5. LOCATIONS OF PIPE OPENINGS AS REQUIRED
6. FRAME AND GRATE -  
SEE ACCOMPANYING SPEC. SHEET
7. ALL MATERIAL USED MADE IN THE USA



**JOINT DETAIL**  
(WHEN NEEDED)



**SECTION A**



**SECTION B**

HOLE SIZE  
AND LOCATION  
VARIES

HOLE CAN BE  
LOCATED ON  
EITHER WALL

PRECAST  
CONCRETE

4X4 W4&W4

SEE NOTE #6

#4 REBAR

**ALTOMARE PRECAST, INC.**  
4300 Wissahickon Ave.  
Philadelphia, PA 19129  
Ph: 215-225-8800 Fax: 215-225-8900

**TITLE: New Jersey  
Type D  
Doghouse**

PROJECT:
CONTR:
DATE: