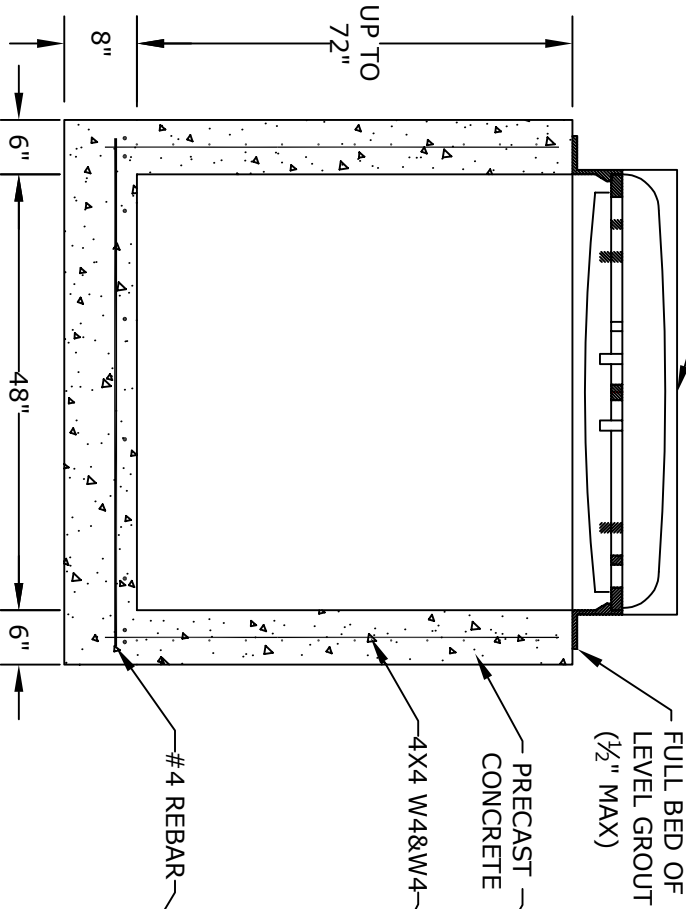
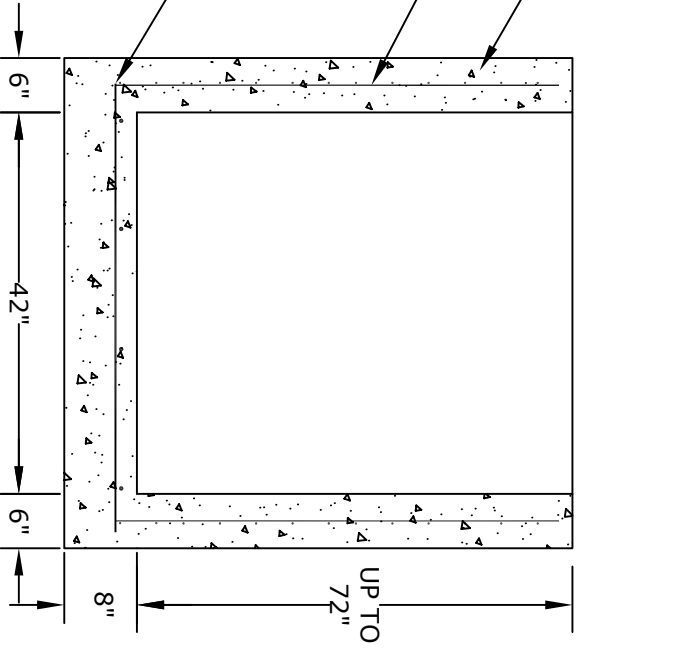


PLAN VIEW

SEE NOTE #6



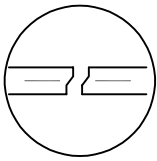
SECTION A



SECTION B

NOTES

1. CONCRETE - 4000psi, AIR ENTRAINED
2. REINFORCING STEEL - GRADE 60, ASTM A-615 WWF 4X4 W4&W4 - ASTM A-185
3. LADDER RUNGS - COPOLYMER POLYPROPYLENE PLASTIC w/1/2" REBAR, GRADE 60
4. H-20 LOADING
5. LOCATIONS OF PIPE OPENINGS AS REQUIRED
6. FRAME AND GRATE - SEE ACCOMPANYING SPEC. SHEET
7. ALL MATERIAL USED MADE IN THE USA



JOINT DETAIL
(WHEN NEEDED)

ALTOMARE PRECAST, INC.
4300 Wissahickon Ave.
Philadelphia, PA 19129
Ph: 215-225-8800 Fax: 215-225-8900

TITLE:
New Jersey
Type B Inlet

PROJECT:
CONTR:
DATE: