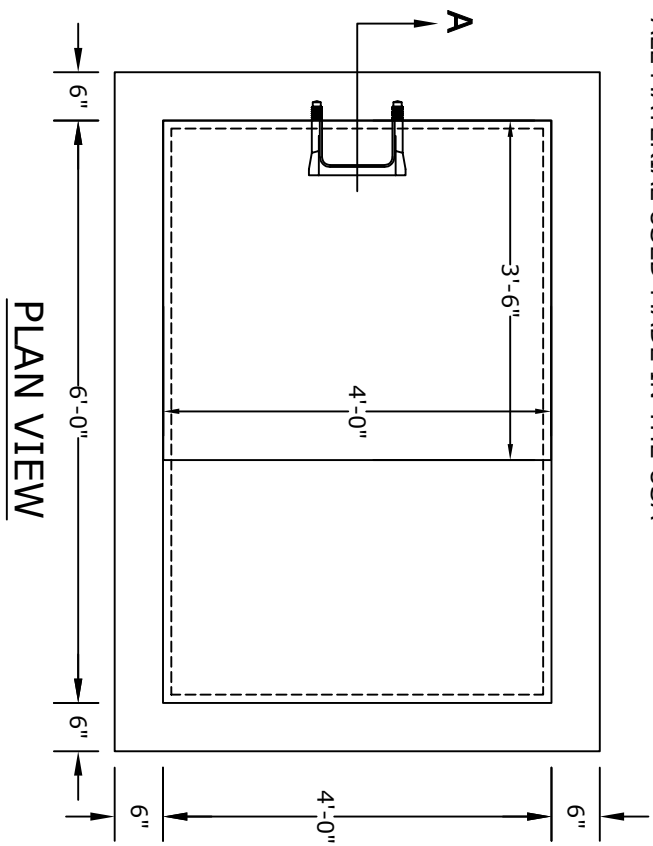
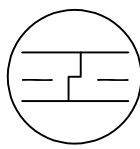


SECTION A

- NOTES**
1. CONCRETE - 4000 psi, AIR ENTRAINED
 2. REINFORCING STEEL - GRADE 60, ASTM A-615
 3. REINFORCING BASED ON PENNDOT RC-46M
 4. WELDED WIRE FABRIC - ASTM-A185
 5. LADDER RUNGS - COPOLYMER POLYPROPYLENE
 6. PLASTIC w/1/2" REBAR, GRADE 60 WHEN NEEDED
 7. MATERIAL AND CONSTRUCTION SHALL COMPLY WITH PENNDOT PUB. 408, 72, & RC46M
 8. LOCATIONS OF PIPE OPENINGS AS REQUIRED
 9. ALL MATERIAL USED MADE IN THE USA



PLAN VIEW

ALTOMARE PRECAST, INC.
 4300 Wissahickon Ave.
 Philadelphia, PA 19129
 Ph: 215-225-8800 Fax: 215-225-8900

TITLE: 6'x4'
 Standard Inlet w/ Deck
 & 42"x48" Casting

PROJECT:
CONTR:
DATE: