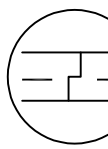
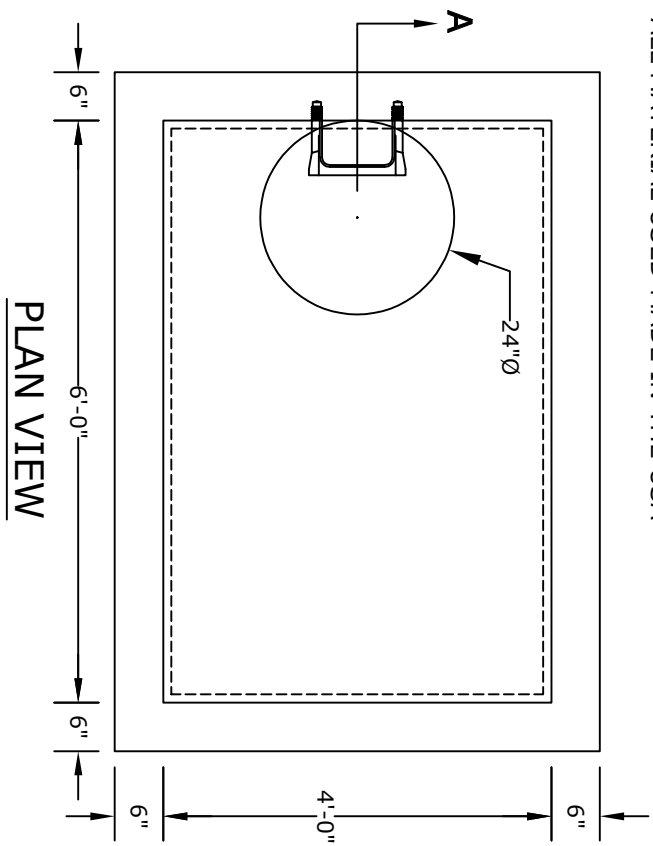


**SECTION A**

- NOTES**
1. CONCRETE- 4000 psi, AIR ENTRAINED
  2. REINFORCING STEEL- GRADE 60, ASTM A-615
  3. REINFORCING BASED ON PENNDOT RC-46M
  4. WELDED WIRE FABRIC- ASTM-A185
  5. LADDER RUNGS- COPOLYMER POLYPROPYLENE
  6. PLASTIC w/1/2" REBAR, GRADE 60 WHEN NEEDED
  7. MATERIAL AND CONSTRUCTION SHALL COMPLY WITH PENNDOT PUB. 408, 72, & RC46M
  8. LOCATIONS OF PIPE OPENINGS AS REQUIRED
  9. ALL MATERIAL USED MADE IN THE USA
- OPTIONAL JOINT  
(WHEN NEEDED)
- 



**PLAN VIEW**

**ALTOMARE PRECAST, INC.**  
 4300 Wissahickon Ave.  
 Philadelphia, PA 19129  
 Ph: 215-225-8800 Fax: 215-225-8900

**TITLE:** 6'x4'  
 Standard Inlet w/ Deck  
 & 24"Ø Casting

**PROJECT:**  
**CONTR:**  
**DATE:**