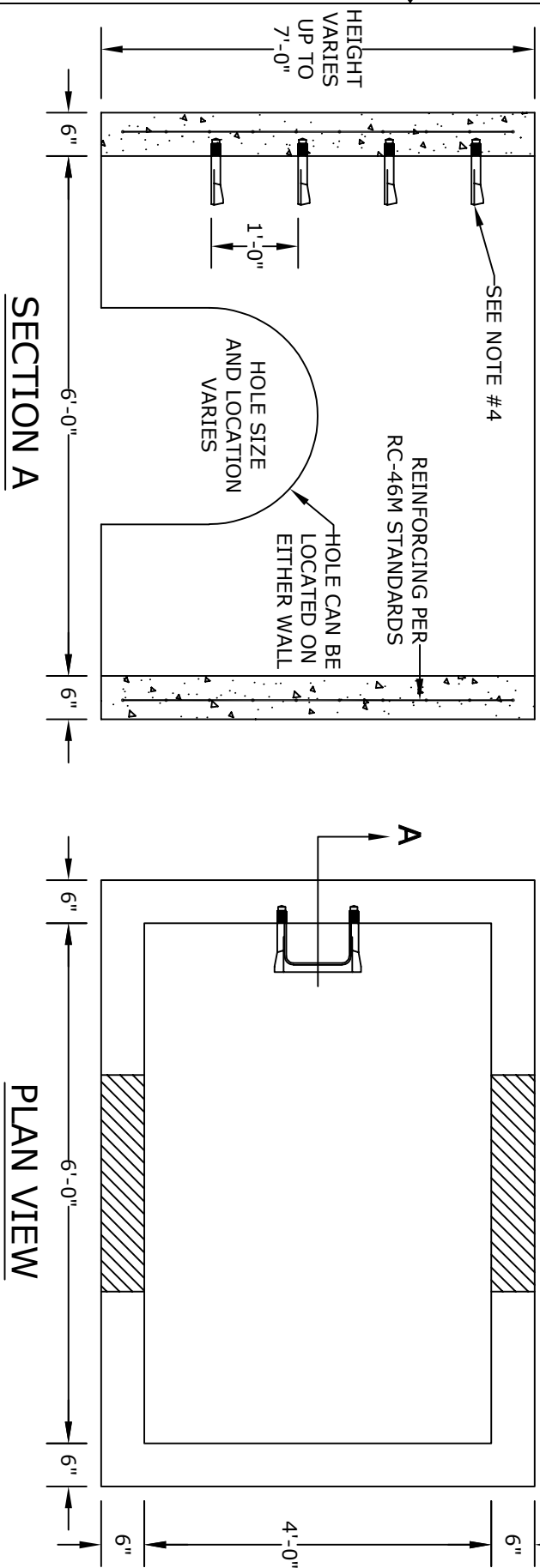


- NOTES**
1. CONCRETE - 4000 psi, AIR ENTRAINED
  2. REINFORCING STEEL - GRADE 60, ASTM A-615 - REINFORCING BASED ON PENNDOT RC-46M
  3. WELDED WIRE FABRIC - ASTM-A185
  4. LADDER RUNGS - COPOLYMER POLYPROPYLENE PLASTIC w/1/2" REBAR, GRADE 60 WHEN NEEDED
  5. MATERIAL AND CONSTRUCTION SHALL COMPLY WITH PENNDOT PUB. 408, 72, & RC46M
  6. LOCATIONS OF PIPE OPENINGS AS REQUIRED
  7. ALL MATERIAL USED MADE IN THE USA



**ALTOMARE PRECAST, INC.**  
 4300 Wissahickon Ave.  
 Philadelphia, PA 19129  
 Ph: 215-225-8800 Fax: 215-225-8900

**TITLE:**  
 6'x4' Doghouse  
 Riser/Top

**PROJECT:**

**CONTR:**

**DATE:**