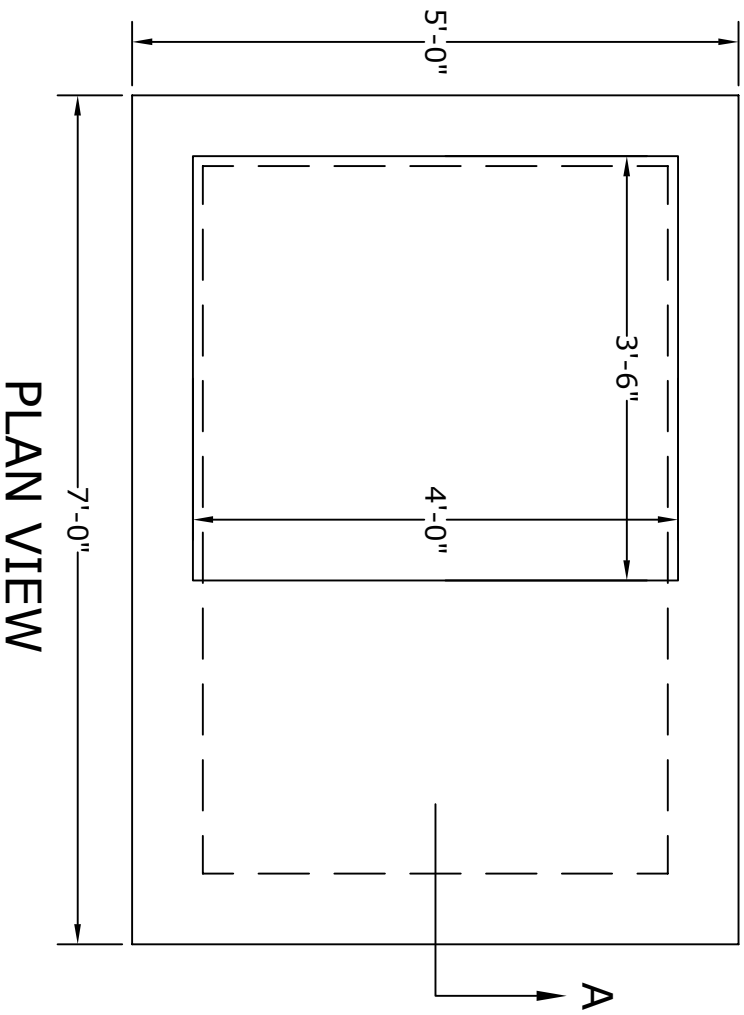
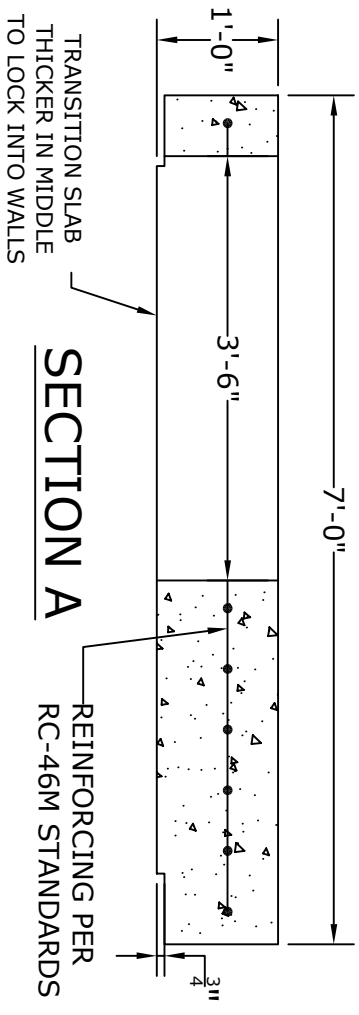


NOTES

1. CONCRETE - 4000 psi, AIR ENTRAINED
2. REINFORCING STEEL - GRADE 60, ASTM A-615
- REINFORCING BASED ON PENNDOT RC-46M
3. MEETS PENNDOT RC-46M SPECIFICATIONS
PUB. 408 SECTION 714
4. ALL MATERIAL USED MADE IN THE USA



PLAN VIEW

Altomare Precast, Inc.
 4300 Wissahickon Avenue
 Philadelphia, PA 19129
 PH: 215-225-8800 FAX: 215-225-8900

TITLE: 6'x4'
 Capping Slab
 w/ 42"x48" Hole

PROJECT:
CONTR:
DATE: