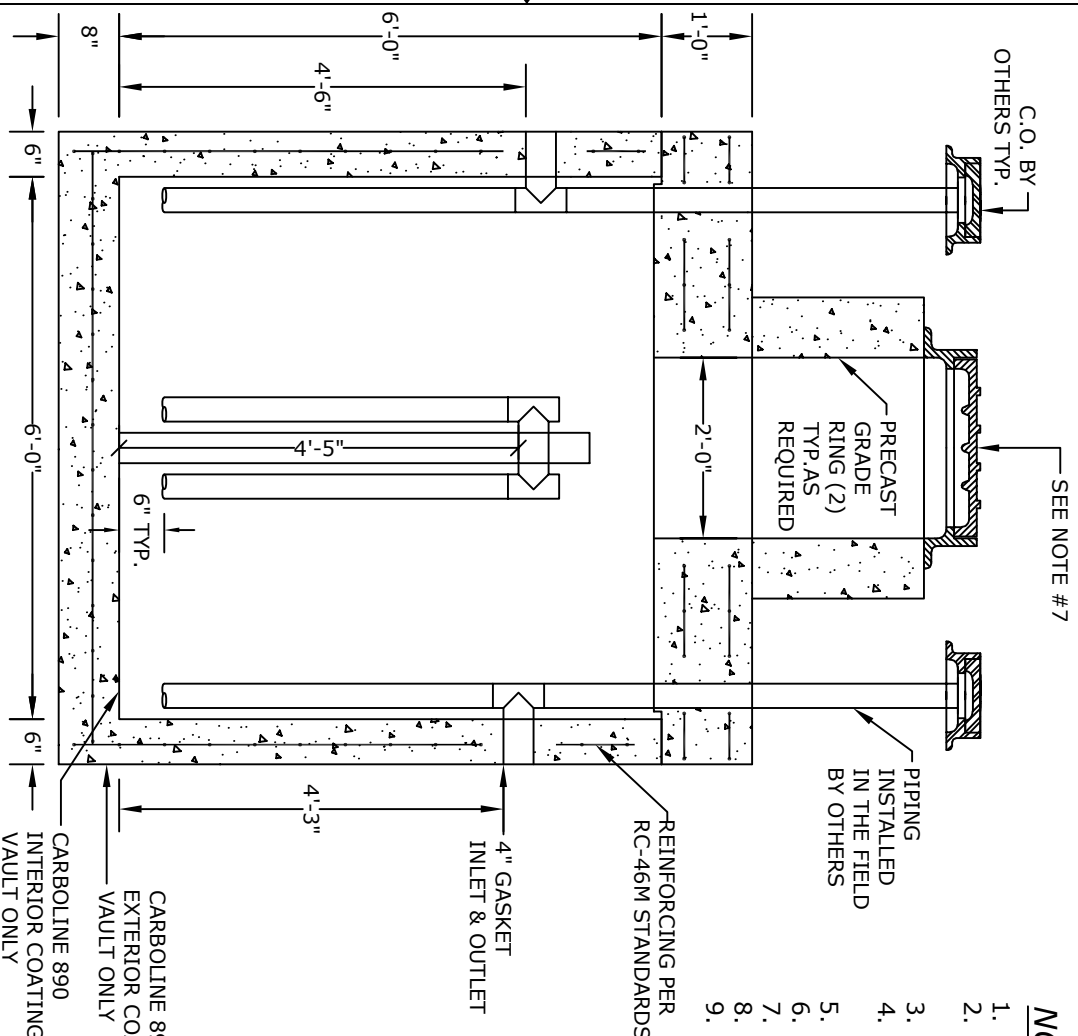


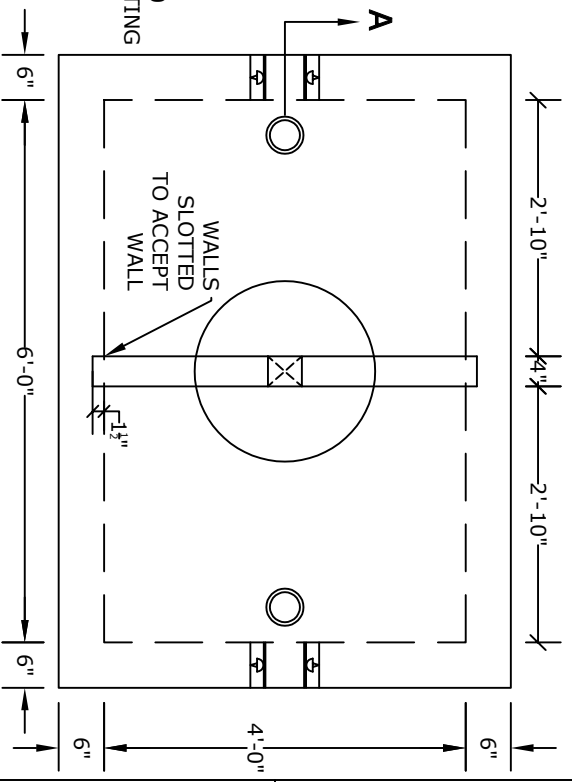
**SECTION A**



**NOTES**

1. CONCRETE - 4000 psi, AIR ENTRAINED
2. REINFORCING STEEL - GRADE 60, ASTM A-615  
- REINFORCING BASED ON PENNDOT RC-46M
3. WELDED WIRE FABRIC - ASTM-A185
4. MATERIAL AND CONSTRUCTION SHALL COMPLY WITH PENNDOT PUB. 408, 72, & RC46M
5. LOCATIONS OF PIPE OPENINGS AS REQUIRED
6. BUTYL JOINT SEALANT - SEE ACCOMPANYING SPEC. SHEET
7. FRAME/COVER - SEE ACCOMPANYING SPEC. SHEETS
8. COATINGS - AS REQUIRED
9. ALL MATERIAL USED MADE IN THE USA

**PLAN VIEW**



**ALTOMARE PRECAST, INC.**  
 4300 Wissahickon Ave.  
 Philadelphia, PA 19129  
 Ph: 215-225-8800 Fax: 215-225-8900

**TITLE:**  
 600 Gallon  
 Grease Tank

**PROJECT:**  
**CONTR:**  
**DATE:**