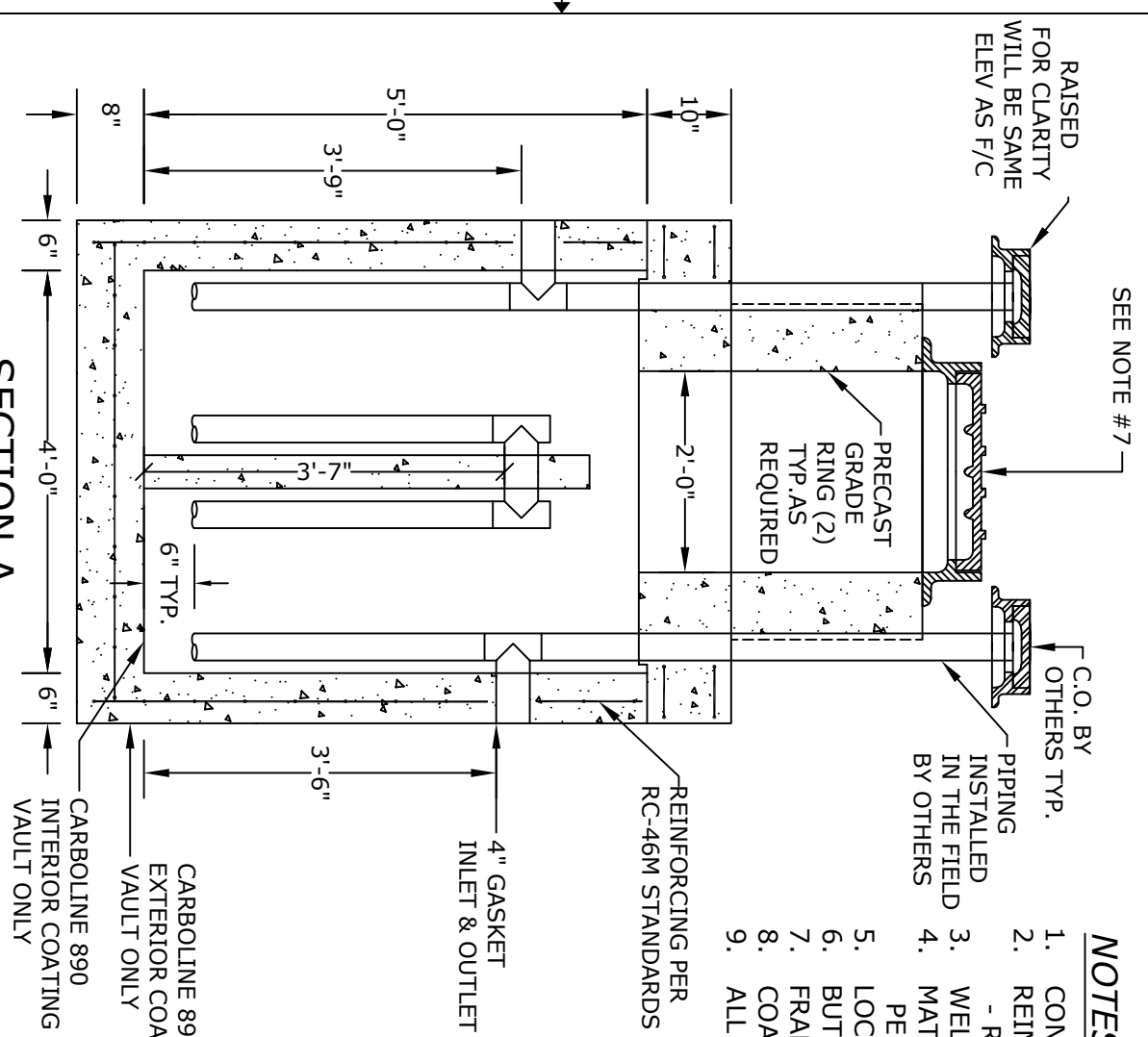
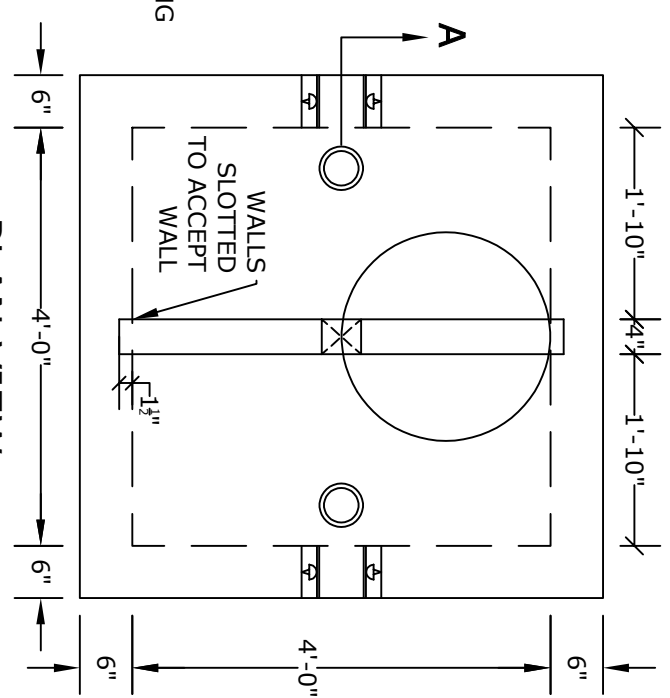


SECTION A



PLAN VIEW



- NOTES**
1. CONCRETE - 4000 psi, AIR ENTRAINED
 2. REINFORCING STEEL - GRADE 60, ASTM A-615
- REINFORCING BASED ON PENNDOT RC-46M
 3. WELDED WIRE FABRIC - ASTM-A185
 4. MATERIAL AND CONSTRUCTION SHALL COMPLY WITH PENNDOT PUB. 408, 72, & RC46M
 5. LOCATIONS OF PIPE OPENINGS AS REQUIRED
 6. BUTYL JOINT SEALANT - SEE ACCOMPANYING SPEC. SHEET
 7. FRAME/COVER - SEE ACCOMPANYING SPEC. SHEETS
 8. COATINGS - AS REQUIRED
 9. ALL MATERIAL USED MADE IN THE USA

ALTOMARE PRECAST, INC.
 4300 Wissahickon Ave.
 Philadelphia, PA 19129
 Ph: 215-225-8800 Fax: 215-225-8900

TITLE:
 315 Gallon Grease Tank

PROJECT:
CONTR:
DATE: