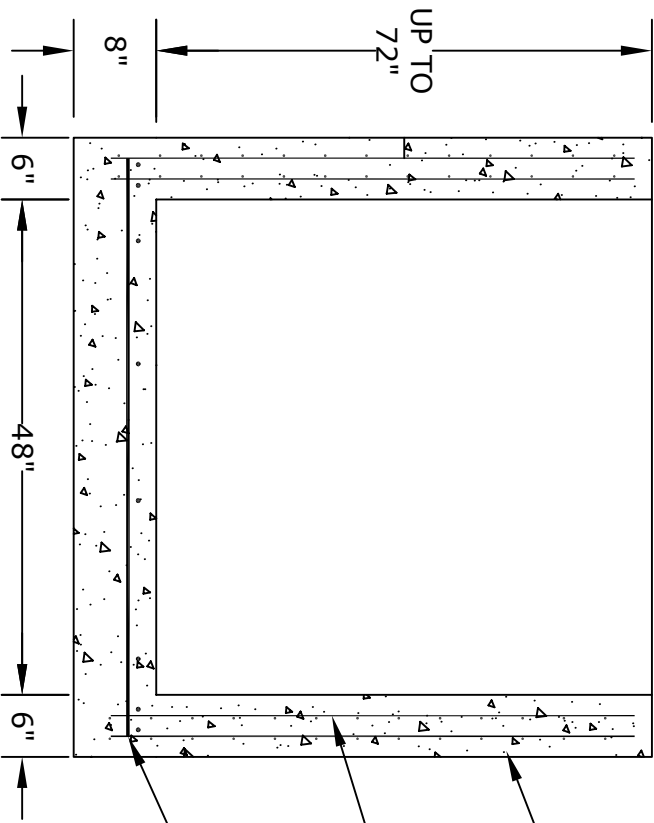
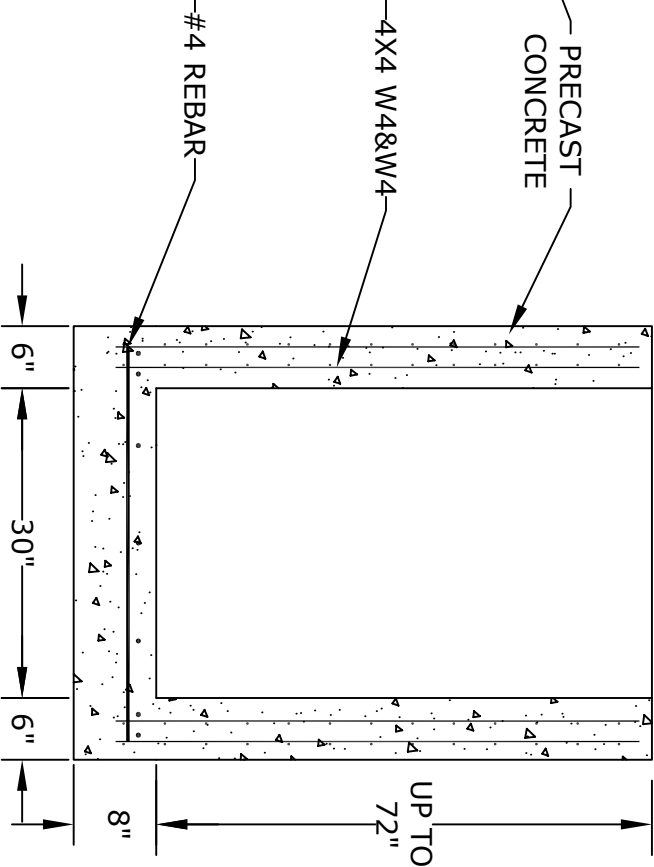


PLAN VIEW

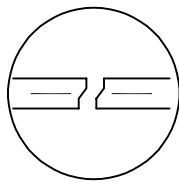


SECTION A



SECTION B

- NOTES**
1. CONCRETE- 4000psi, AIR ENTRAINED
 2. REINFORCING STEEL- GRADE 60, ASTM A-615 WWF 4X4 W4&W4- ASTM A-185
 3. LADDER RUNGS- COPOLYMER POLYPROPYLENE PLASTIC w/1/2" REBAR, GRADE 60
 4. H-25 LOADING
 5. LOCATIONS OF PIPE OPENINGS AS REQUIRED
 6. ALL MATERIAL USED MADE IN THE USA



**JOINT DETAIL
(WHEN NEEDED)**

ALTOMARE PRECAST, INC.
 4300 Wissahickon Ave.
 Philadelphia, PA 19129
 Ph: 215-225-8800 Fax: 215-225-8900

TITLE:
 30"x48" Inlet

PROJECT:
 CONTR:
 DATE: