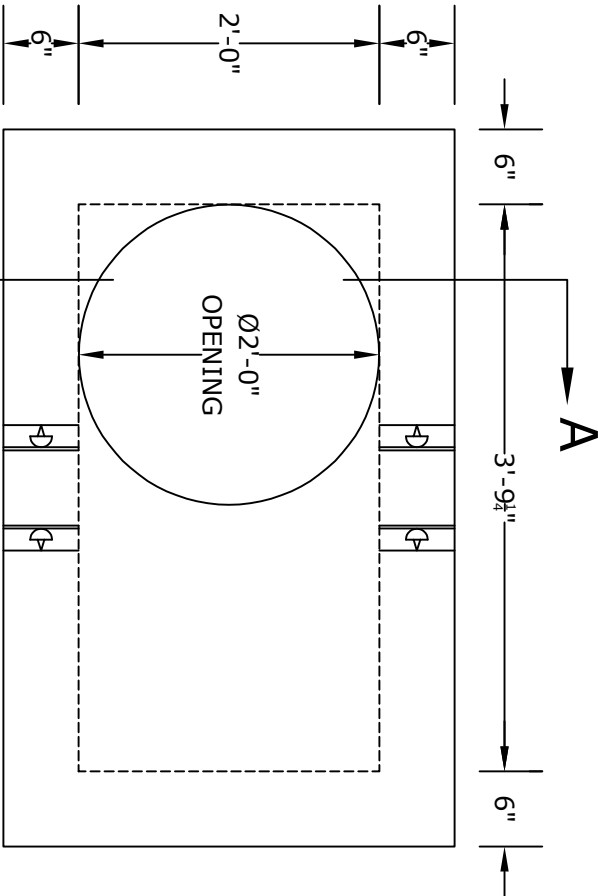


SEE NOTE #5

NOTES

1. CONCRETE - 4000 psi, AIR ENTRAINED
2. REINFORCING STEEL - GRADE 60, ASTM A-615
- REINFORCING BASED ON PENNDOT RC-46M
3. WELDED WIRE FABRIC - ASTM-A185
4. LADDER RUNGS - NONE
5. FRAME AND COVER
- SEE ACCOMPANYING SPEC. SHEET
6. MATERIAL AND CONSTRUCTION SHALL COMPLY WITH PENNDOT PUB. 408, 72, & RC46M
7. BUTYL JOINT SEALANT
- SEE ACCOMPANYING SPEC. SHEET
8. COATINGS - AS REQUIRED
9. ALL MATERIAL USED MADE IN THE USA



SECTION A-A

PLAN VIEW

ALTOMARE PRECAST, INC.
 4300 Wissahickon Ave.
 Philadelphia, PA 19129
 Ph: 215-225-8800 Fax: 215-225-8900

TITLE:

250 Gallon Grease Tank

PROJECT:

CONTR:

DATE: