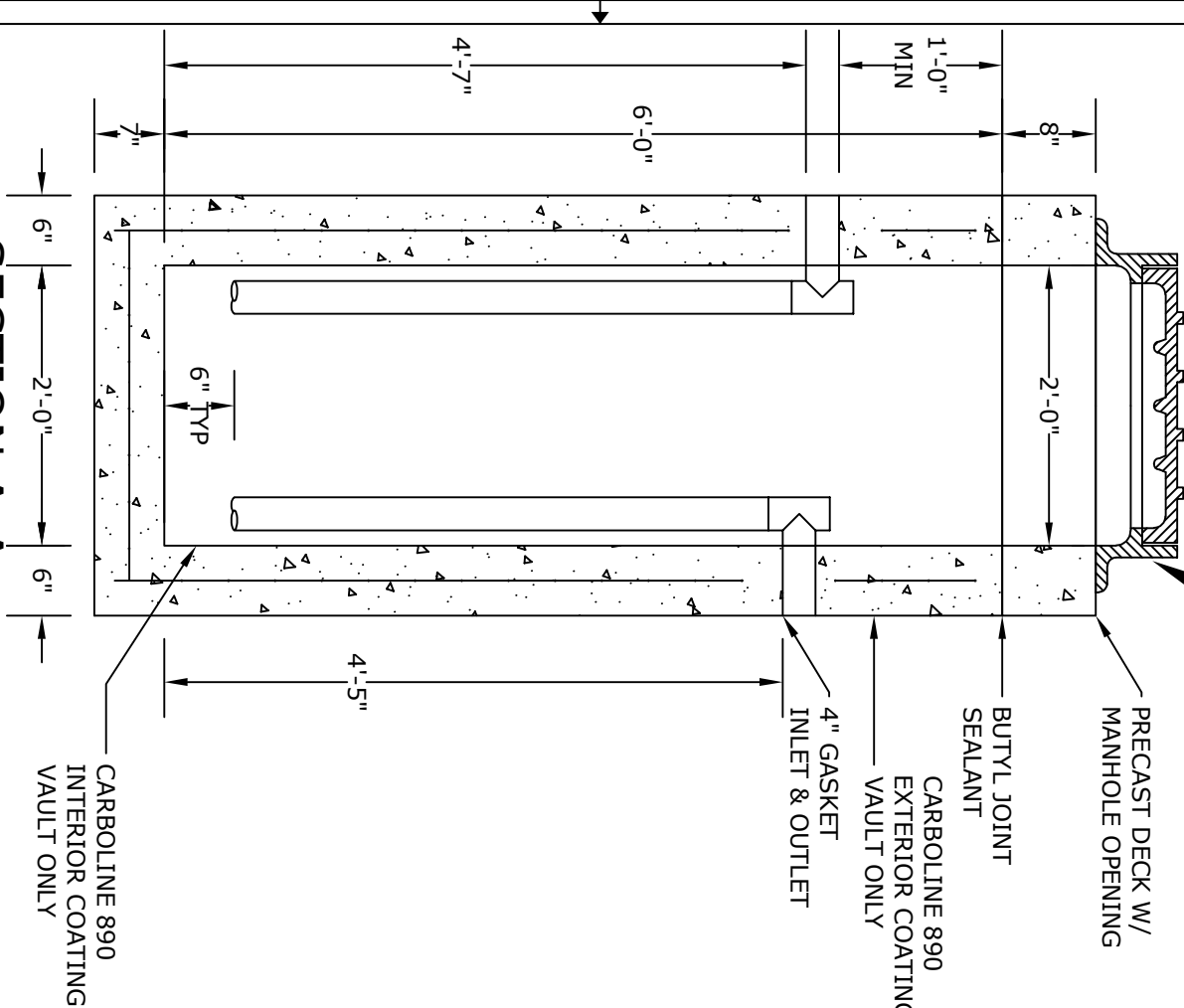


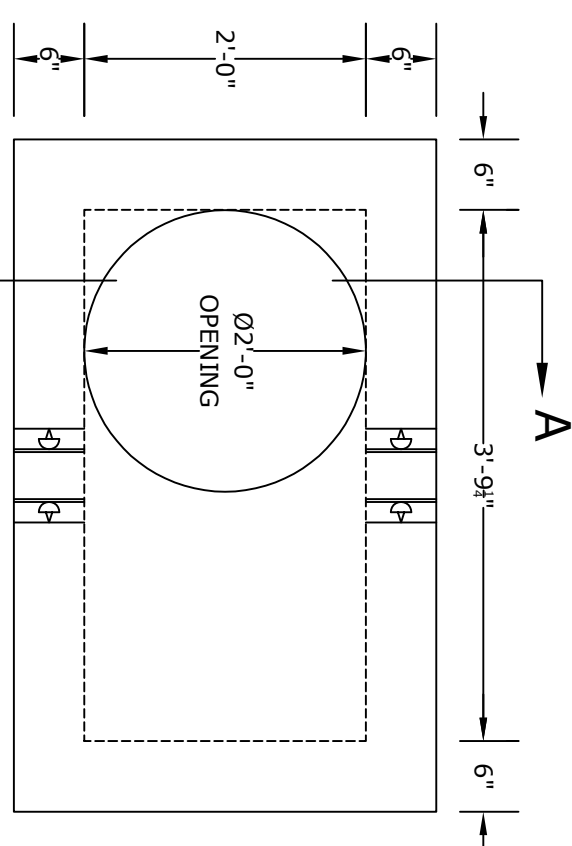
SECTION A-A



NOTES

1. CONCRETE- 4000 psi, AIR ENTRAINED
2. REINFORCING STEEL- GRADE 60, ASTM A-615
- REINFORCING BASED ON PENNDOT RC-46M
3. WELDED WIRE FABRIC- ASTM-A185
4. LADDER RUNGS- NONE
5. FRAME AND COVER
6. - SEE ACCOMPANYING SPEC. SHEET
MATERIAL AND CONSTRUCTION SHALL COMPLY WITH PENNDOT PUB. 408, 72, & RC46M
7. BUTYL JOINT SEALANT
- SEE ACCOMPANYING SPEC. SHEET
8. COATINGS- AS REQUIRED
9. ALL MATERIAL USED MADE IN THE USA

PLAN VIEW



ALTOMARE PRECAST, INC.
 4300 Wissahickon Ave.
 Philadelphia, PA 19129
 Ph: 215-225-8800 Fax: 215-225-8900

TITLE:
250 Gallon Grease Tank

PROJECT:
CONTR:
DATE: