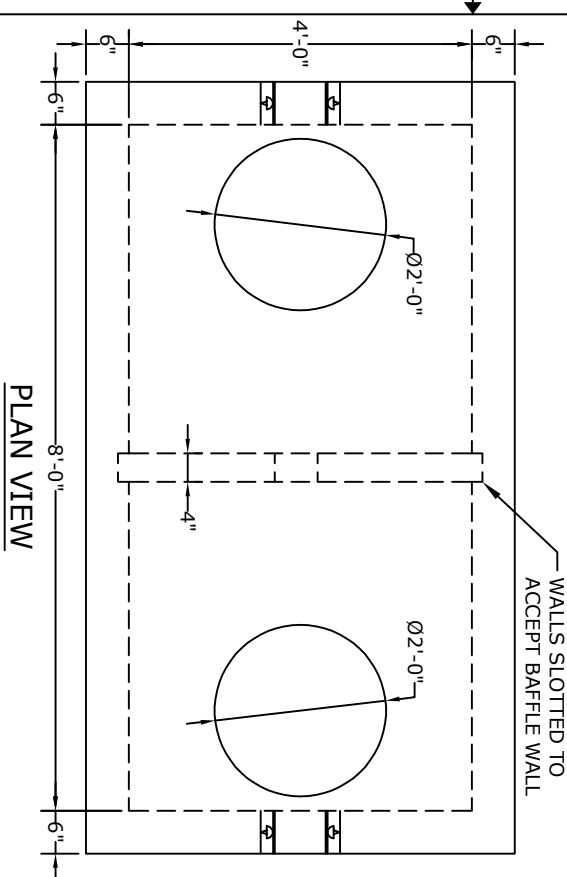
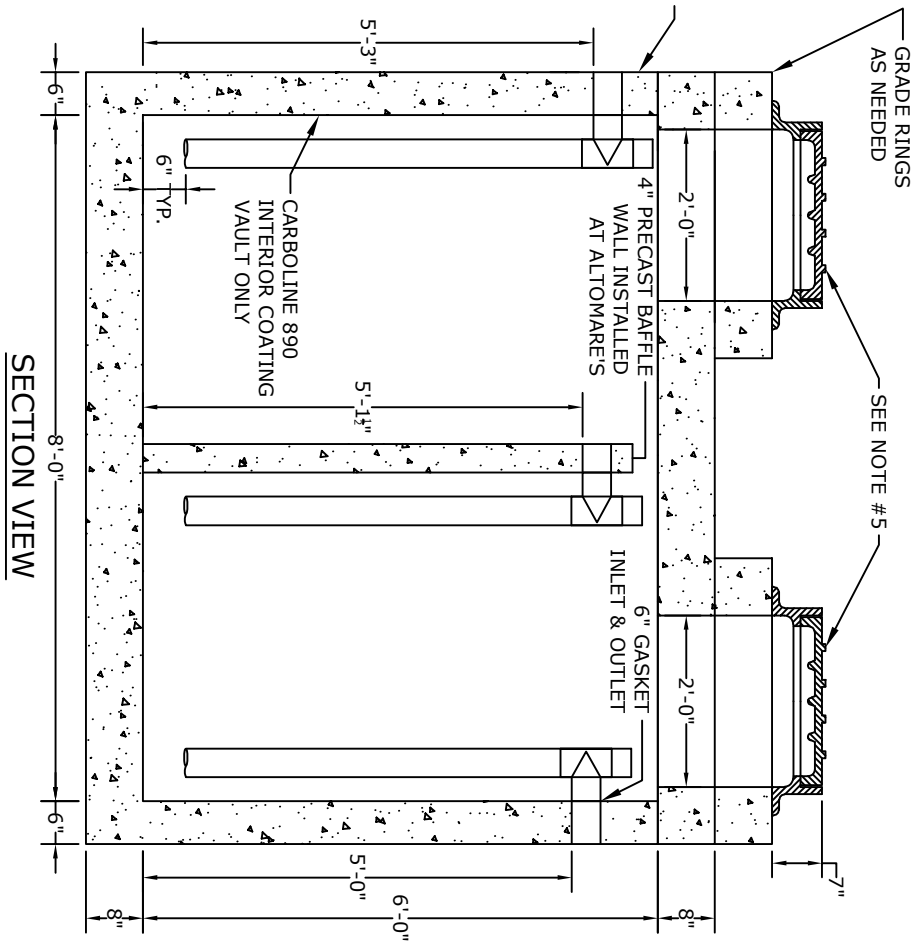


- NOTES**
1. CONCRETE - 4000psi, AIR ENTRAINED
 2. REINFORCING STEEL - GRADE 60, ASTM A-615
 3. WELDED WIRE FABRIC - ASTM A-185
 4. FRAME AND COVER - SEE ACCOMPANYING SPEC. SHEET
 5. MATERIAL AND CONSTRUCTION SHALL COMPLY WITH PENNDOT PUBLICATION 408, 72, & RC-34
 6. H-20 LOADING
 7. ALL INTERNAL PVC PIPING SUPPLIED & INSTALLED BY OTHERS
 8. COATINGS - AS REQUIRED
 9. ALL MATERIAL USED MADE IN THE USA



PLAN VIEW



SECTION VIEW

Altomare Precast, Inc.
 4300 Wissahickon Avenue
 Philadelphia, PA 19129
 PH: 215-225-8800 FAX: 215-225-8900

8'x4'
1000 Gallon
Grease Tank

PROJECT:
 CONTR:
 DATE: