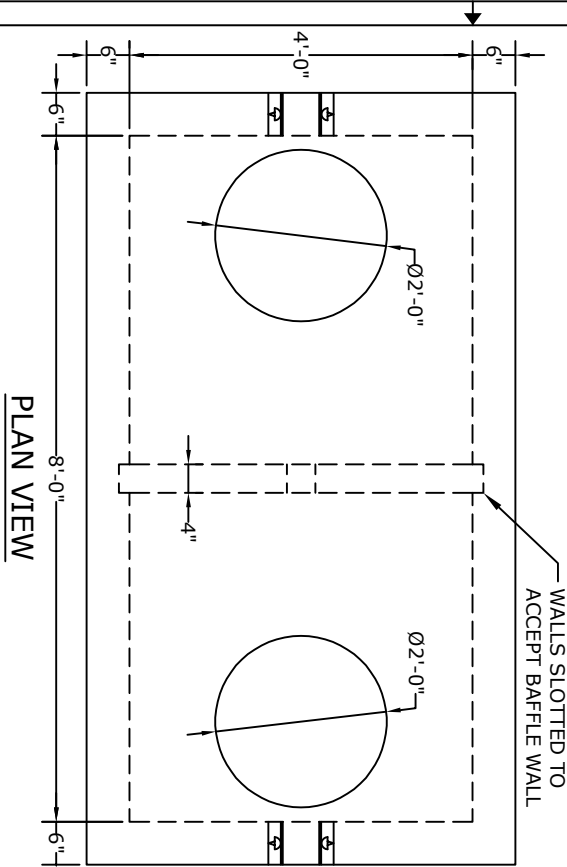
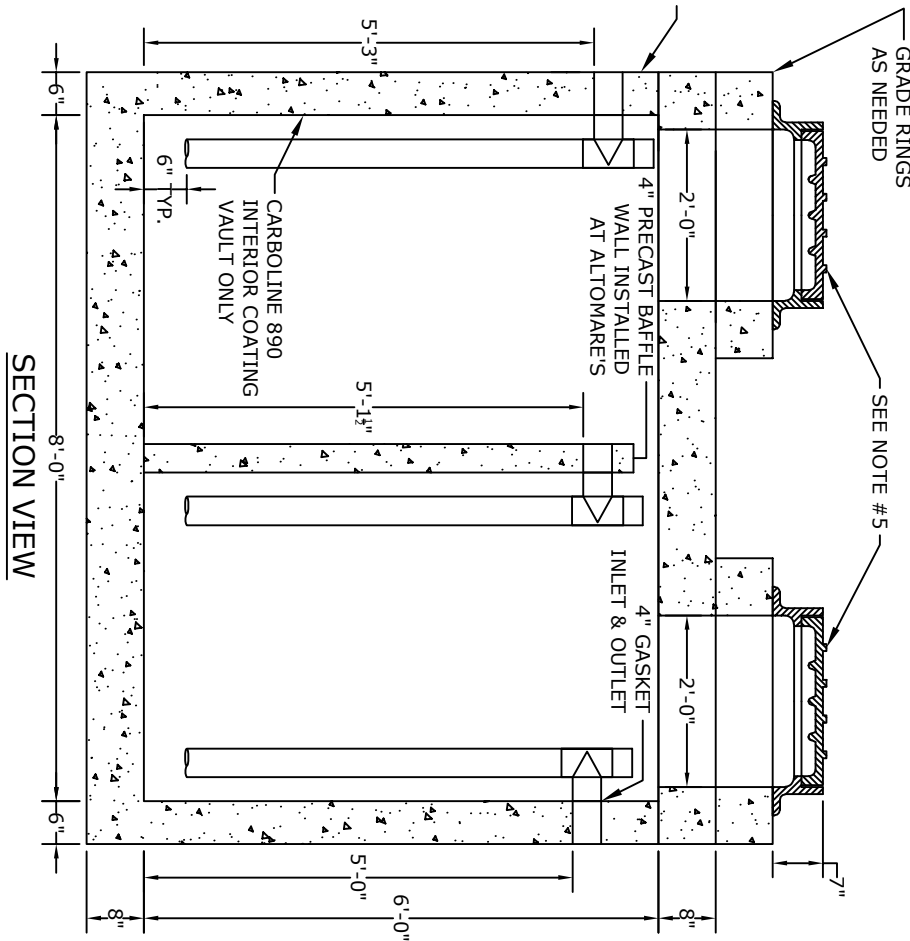


NOTES

1. CONCRETE - 4000psi, AIR ENTRAINED
2. REINFORCING STEEL - GRADE 60, ASTM A-615
3. WELDED WIRE FABRIC - ASTM A-185
4. FRAME AND COVER - SEE ACCOMPANYING SPEC. SHEET
5. MATERIAL AND CONSTRUCTION SHALL COMPLY WITH PENNDOT PUBLICATION 408, 72, & RC-34
6. H-20 LOADING
7. ALL INTERNAL PVC PIPING SUPPLIED
8. & INSTALLED BY OTHERS
9. COATINGS - AS REQUIRED
10. ALL MATERIAL USED MADE IN THE USA



PLAN VIEW



SECTION VIEW

Altomare Precast, Inc.
 4300 Wissahickon Avenue
 Philadelphia, PA 19129
 PH: 215-225-8800 FAX: 215-225-8900

8'x4'
1000 Gallon
Grease Tank

PROJECT:
 CONTR:
 DATE: