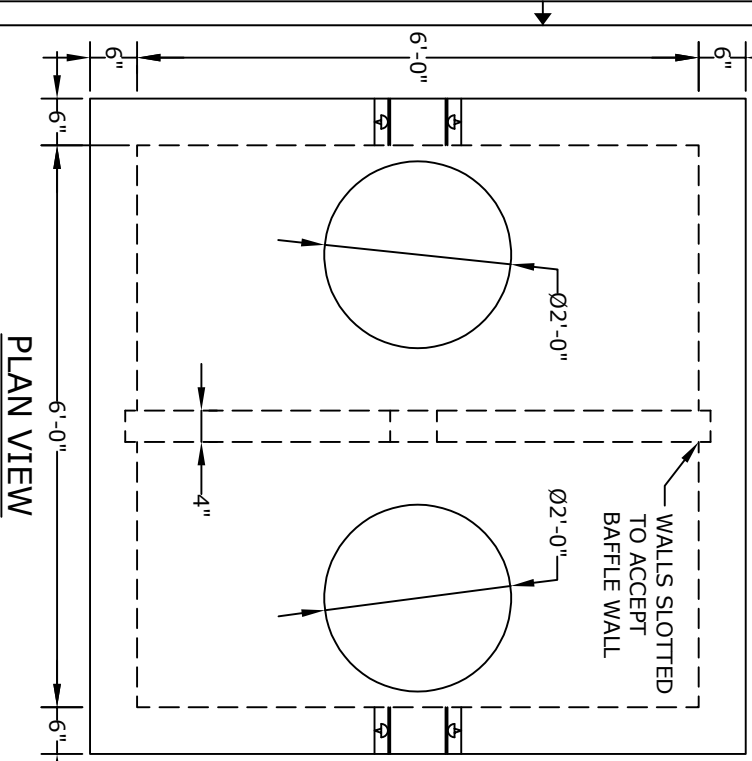
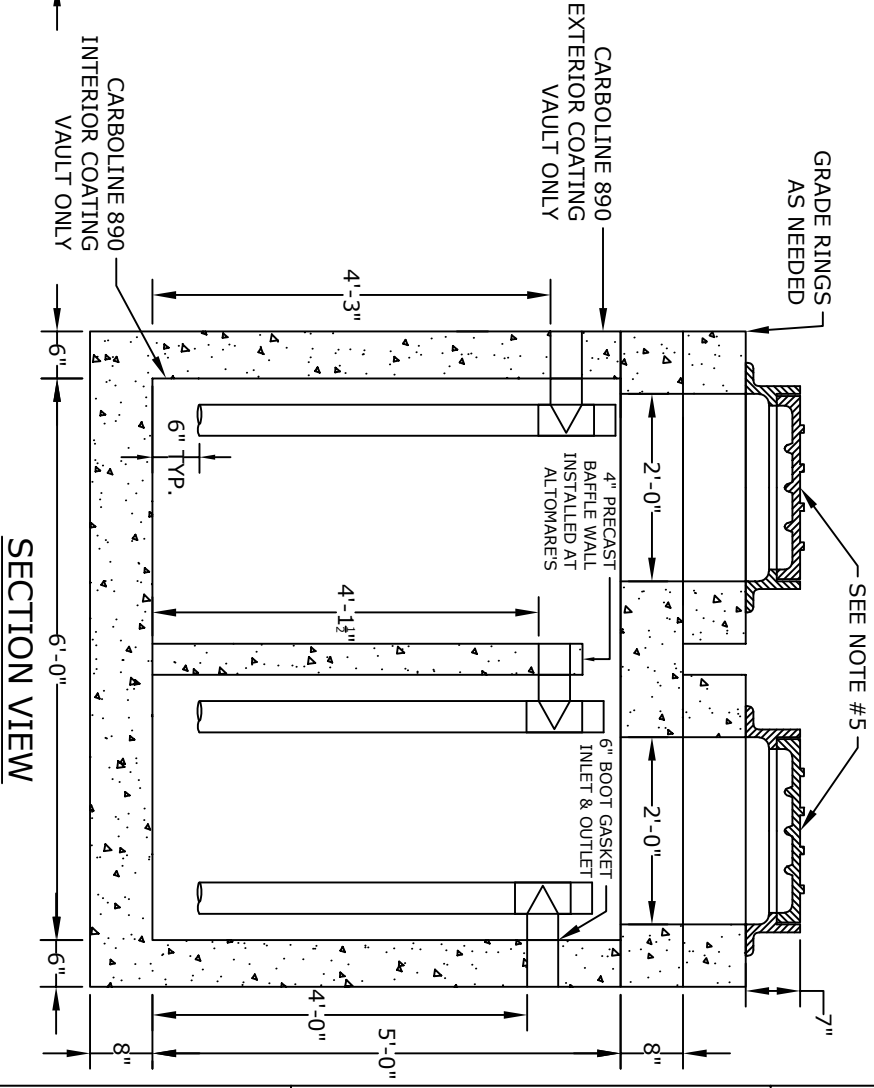


NOTES

1. CONCRETE- 4000psi, AIR ENTRAINED
2. REINFORCING STEEL- GRADE 60, ASTM A-615
3. WELDED WIRE FABRIC- ASTM A-185
4. FRAME AND COVER- SEE ACCOMPANYING SPEC. SHEET
5. MATERIAL AND CONSTRUCTION SHALL COMPLY WITH PENNDOT PUBLICATION 408, 72 & RC-34
6. H-20 LOADING
7. COATINGS- AS REQUIRED
8. ALL MATERIAL USED MADE IN THE USA



PLAN VIEW



SECTION VIEW

Altomare Precast, Inc.
 4300 Wissahickon Avenue
 Philadelphia, PA 19129
 PH: 215-225-8800 FAX: 215-225-8900

6'x6'
1000 Gallon
Grease Tank

PROJECT:
 CONTR:
 DATE: