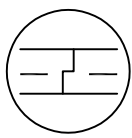
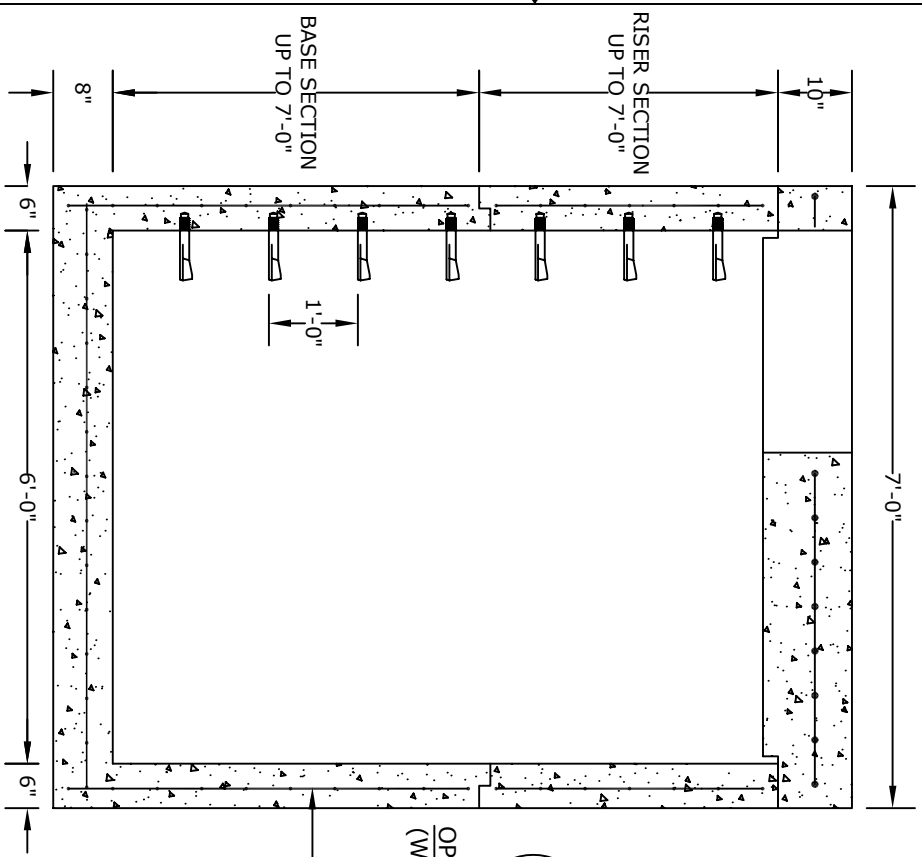


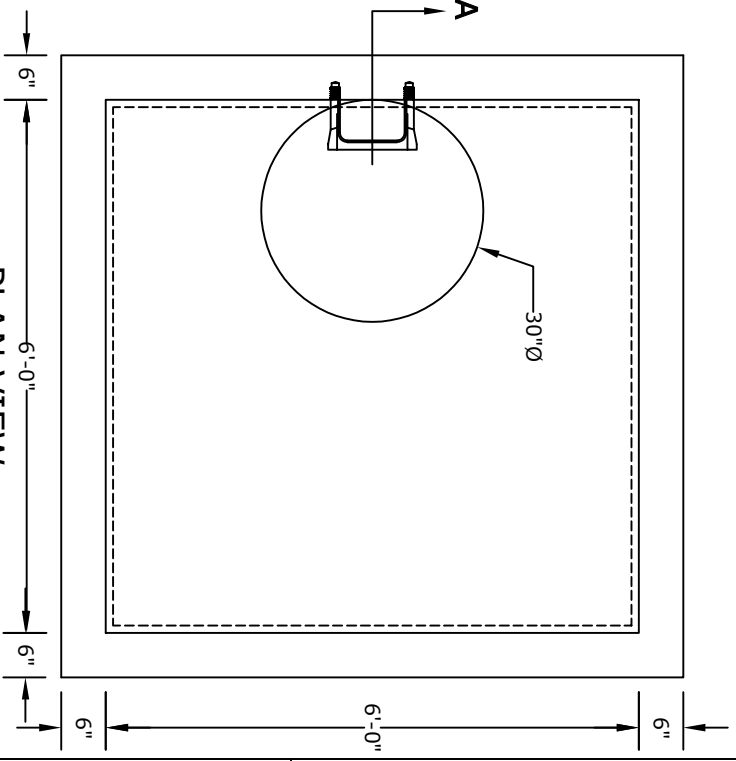
**SECTION A**



OPTIONAL JOINT  
(WHEN NEEDED)

REINFORCING PER  
RC-46M STANDARDS

**PLAN VIEW**



**NOTES**

1. CONCRETE - 4000 psi, AIR ENTRAINED
2. REINFORCING STEEL - GRADE 60, ASTM A-615  
- REINFORCING BASED ON PENNDOT RC-46M
3. WELDED WIRE FABRIC - ASTM-A185
4. LADDER RUNGS - COPOLYMER POLYPROPYLENE  
PLASTIC w/1/2" REBAR, GRADE 60 WHEN NEEDED
5. MATERIAL AND CONSTRUCTION SHALL COMPLY WITH  
PENNDOT PUB. 408, 72, & RC46M
6. LOCATIONS OF PIPE OPENINGS AS REQUIRED
7. ALL MATERIAL USED MADE IN THE USA

**ALTOMARE PRECAST, INC.**  
4300 Wissahickon Ave.  
Philadelphia, PA 19129  
Ph: 215-225-8800 Fax: 215-225-8900

**TITLE:**  
PENNDOT Type 6 Box  
w/ 6" Walls, Deck,  
& 30"Ø Casting

PROJECT:  
CONTR:  
DATE: