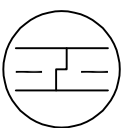
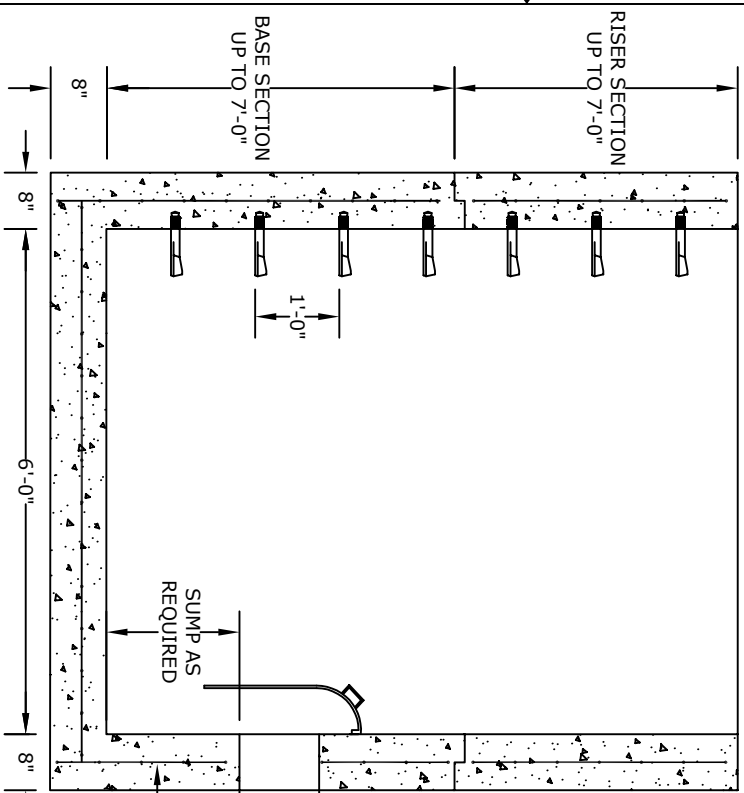


SECTION A

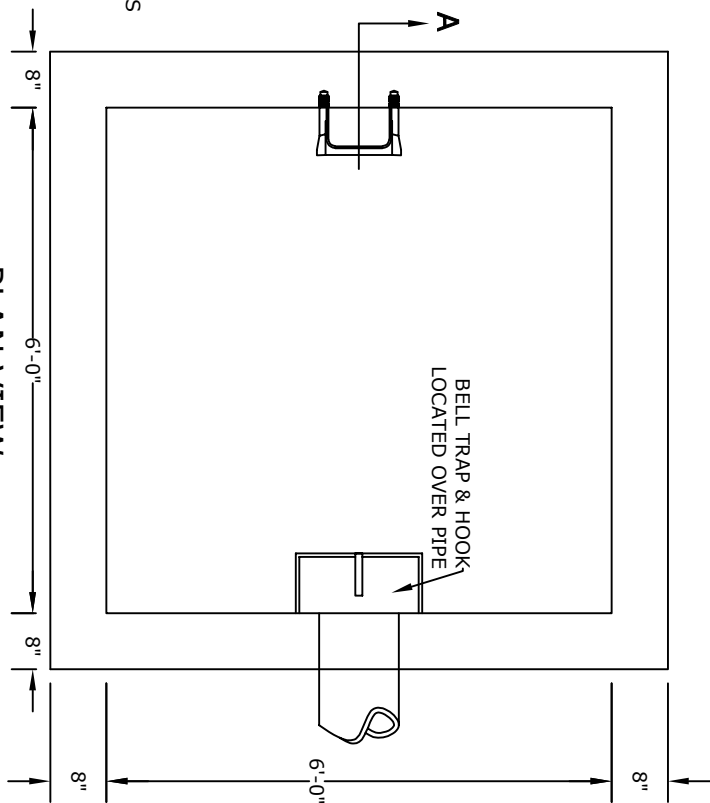


OPTIONAL JOINT
(WHEN NEEDED)

SUMP AS
REQUIRED

REINFORCING PER
RC-46M STANDARDS

PLAN VIEW



BELL TRAP & HOOK
LOCATED OVER PIPE

- NOTES**
1. CONCRETE- 4000 psi, AIR ENTRAINED
 2. REINFORCING STEEL- GRADE 60, ASTM A-615
- REINFORCING BASED ON PENNDOT RC-46M
 3. WELDED WIRE FABRIC- ASTM-A185
 4. LADDER RUNGS- COPOLYMER POLYPROPYLENE
PLASTIC w/1/2" REBAR, GRADE 60 WHEN NEEDED
 5. MATERIAL AND CONSTRUCTION SHALL COMPLY WITH
PENNDOT PUB. 408, 72, & RC46M
 6. LOCATIONS OF PIPE OPENINGS AS REQUIRED
 7. ALL MATERIAL USED MADE IN THE USA
 8. TRAP/SNOUT- SEE ACCOMPANYING SPEC. SHEET

ALTOMARE PRECAST, INC.
4300 Wissahickon Ave.
Philadelphia, PA 19129
Ph: 215-225-8800 Fax: 215-225-8900

TITLE:
PENNDOT Type 6 Box
8" Walls w/ Sump & Trap

PROJECT:
CONTR:
DATE: