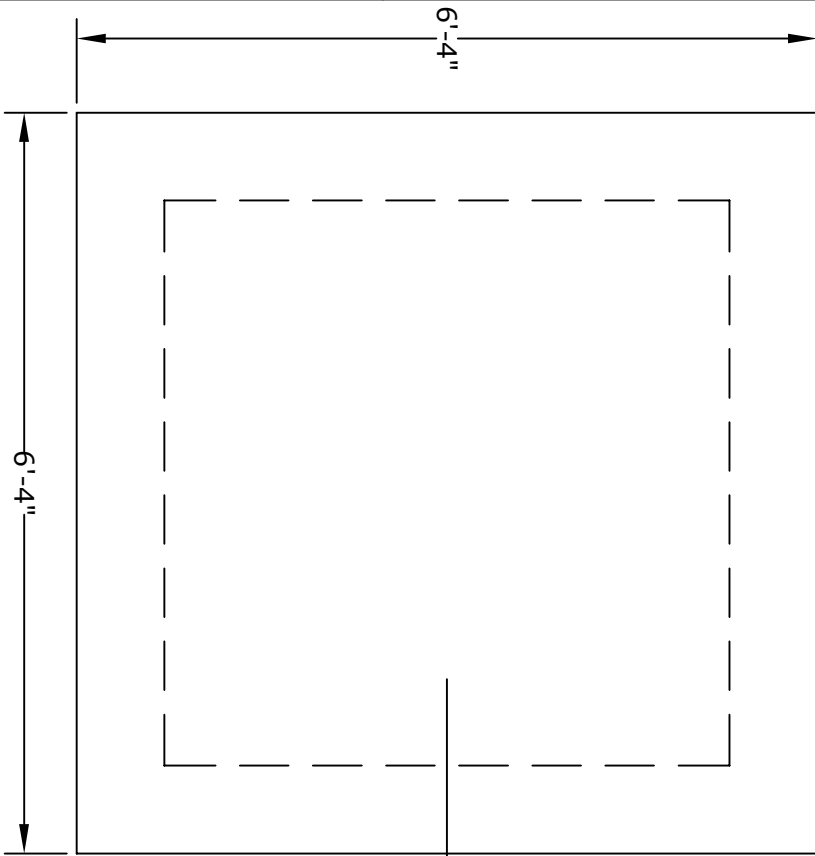


PLAN VIEW



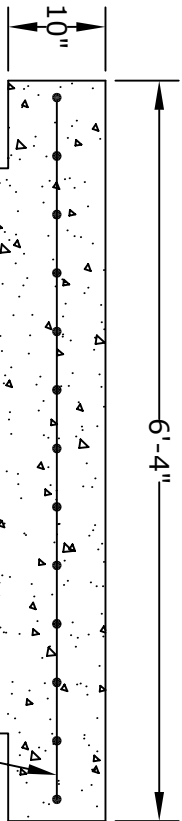
NOTES

1. CONCRETE- 4000 psi, AIR ENTRAINED
2. REINFORCING STEEL- GRADE 60, ASTM A-615
- REINFORCING BASED ON PENNDOT RC-46M
3. MEETS PENNDOT RC-46M SPECIFICATIONS
PUB. 408 SECTION 714
4. ALL MATERIAL USED MADE IN THE USA

TRANSITION SLAB
THICKER IN MIDDLE
TO LOCK INTO WALLS

SECTION A

REINFORCING PER
RC-46M STANDARDS



Altomare Precast, Inc.

4300 Wissahickon Avenue
Philadelphia, PA 19129

PH: 215-225-8800 FAX: 215-225-8900

TITLE:

Type 5 Inlet
Capping Slab
for 8" Walls

PROJECT:

CONTR:

DATE: