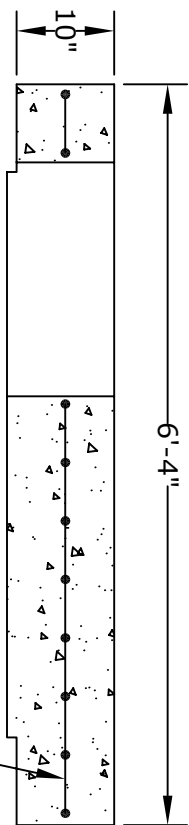


**PLAN VIEW**

TRANSITION SLAB  
THICKER IN MIDDLE  
TO LOCK INTO WALLS



**SECTION A**

REINFORCING PER  
RC-46M STANDARDS

**NOTES**

1. CONCRETE - 4000 psi, AIR ENTRAINED
2. REINFORCING STEEL - GRADE 60, ASTM A-615  
- REINFORCING BASED ON PENNDOT RC-46M
3. MEETS PENNDOT RC-46M SPECIFICATIONS  
PUB. 408 SECTION 714
4. ALL MATERIAL USED MADE IN THE USA

**Altomare Precast, Inc.**  
4300 Wissahickon Avenue  
Philadelphia, PA 19129  
PH: 215-225-8800 FAX: 215-225-8900

**TITLE:**  
Type 5 Inlet  
Capping Slab w/ 24"Ø  
Hole for 8" Walls

**PROJECT:**  
**CONTR:**  
**DATE:**