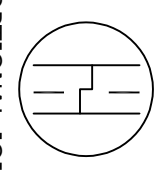


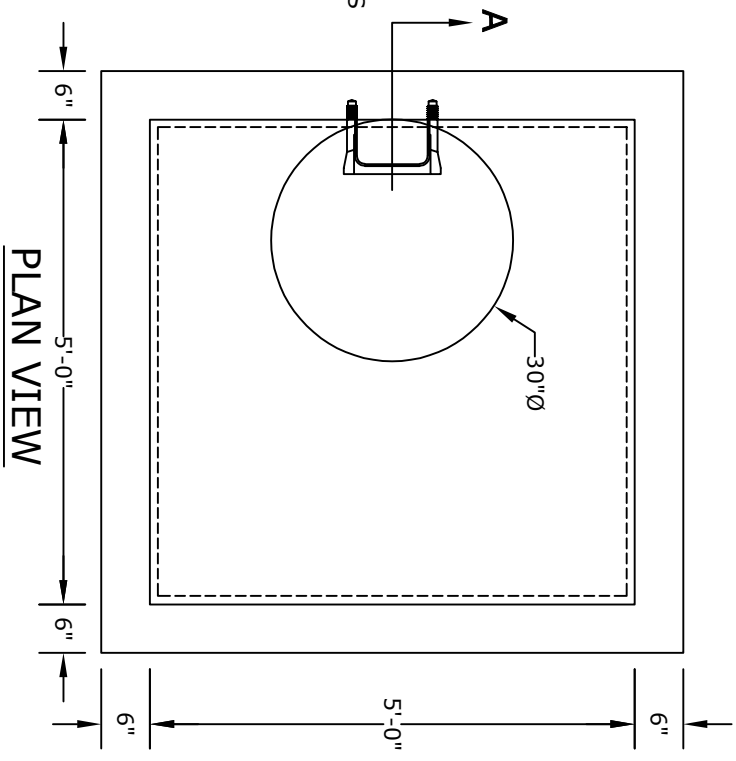
**SECTION A**

- NOTES**
1. CONCRETE - 4000 psi, AIR ENTRAINED
  2. REINFORCING STEEL - GRADE 60, ASTM A-615 - REINFORCING BASED ON PENNDOT RC-46M
  3. WEILED WIRE FABRIC - ASTM-A185
  4. LADDER RUNGS - COPOLYMER POLYPROPYLENE PLASTIC, w/1/2" REBAR, GRADE 60 WHEN NEEDED
  5. MATERIAL AND CONSTRUCTION SHALL COMPLY WITH PENNDOT PUB. 408, 72, & RC46M
  6. LOCATIONS OF PIPE OPENINGS AS REQUIRED
  7. ALL MATERIAL USED MADE IN THE USA



**OPTIONAL JOINT  
(WHEN NEEDED)**

REINFORCING PER  
RC-46M STANDARDS



**PLAN VIEW**

**ALTOMARE PRECAST, INC.**  
 4300 Wissahickon Ave.  
 Philadelphia, PA 19129  
 Ph: 215-225-8800 Fax: 215-225-8900

**TITLE:**  
**PENNDOT Type 5 Box  
 w/ 6" Walls, Deck,  
 & 30"Ø Casting**

**PROJECT:**  
**CONTR:**  
**DATE:**