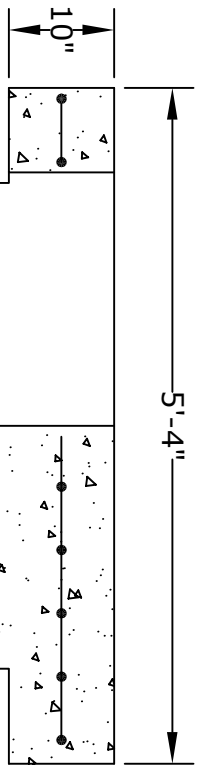


PLAN VIEW

TRANSITION SLAB
THICKER IN MIDDLE
TO LOCK INTO WALLS



SECTION A

REINFORCING PER
RC-46M STANDARDS

NOTES

1. CONCRETE - 4000 psi, AIR ENTRAINED
2. REINFORCING STEEL - GRADE 60, ASTM A-615
- REINFORCING BASED ON PENNDOT RC-46M
3. MEETS PENNDOT RC-46M SPECIFICATIONS
PUB. 408 SECTION 714
4. ALL MATERIAL USED MADE IN THE USA

Altomare Precast, Inc.
4300 Wissahickon Avenue
Philadelphia, PA 19129
PH: 215-225-8800 FAX: 215-225-8900

TITLE:
Type 4 Inlet
Capping Slab w/ 2'x4'
Hole for 8" Walls

PROJECT:
CONTR:
DATE: