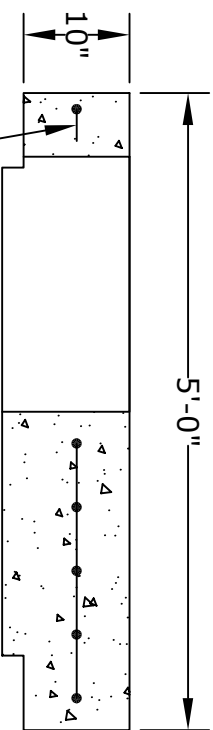


**PLAN VIEW**

REINFORCING PER RC-46M STANDARDS

**SECTION A**

TRANSITION SLAB THICKER IN MIDDLE TO LOCK INTO WALLS



**NOTES**

1. CONCRETE- 4000 psi, AIR ENTRAINED
2. REINFORCING STEEL- GRADE 60, ASTM A-615  
- REINFORCING BASED ON PENNDOT RC-46M
3. MEETS PENNDOT RC-46M SPECIFICATIONS  
PUB. 408 SECTION 714
4. ALL MATERIAL USED MADE IN THE USA

**Altomare Precast, Inc.**  
 4300 Wissahickon Avenue  
 Philadelphia, PA 19129  
 PH: 215-225-8800 FAX: 215-225-8900

**TITLE:**  
 Type 4 Inlet  
 Capping Slab  
 w/ 24"Ø

**PROJECT:**  
**CONTR:**  
**DATE:**