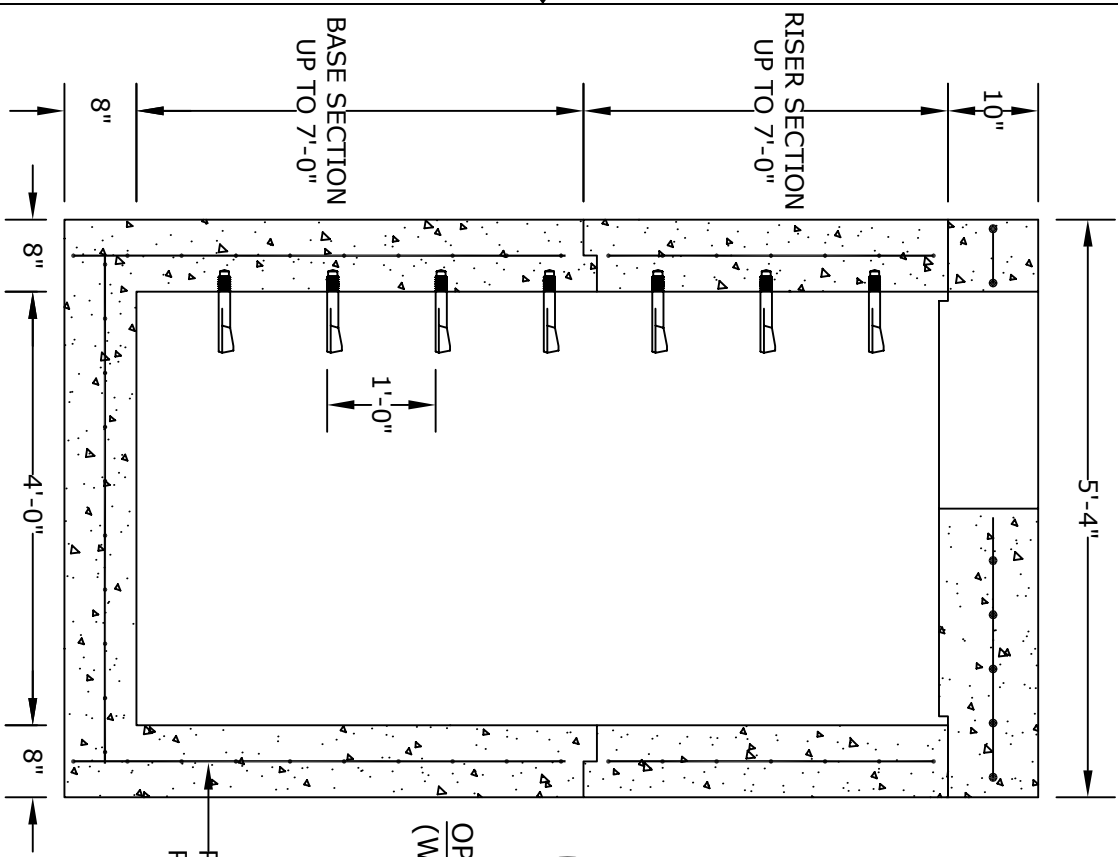


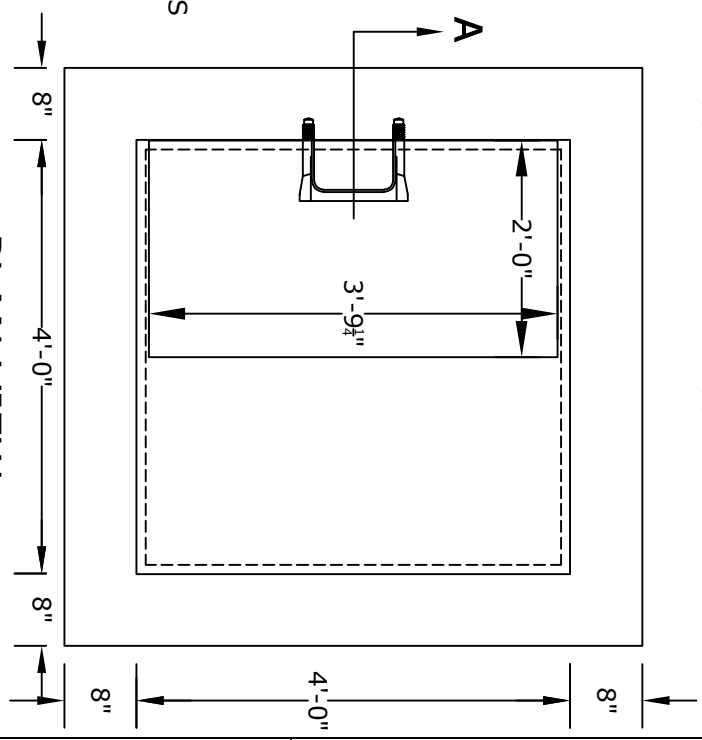
SECTION A



NOTES

1. CONCRETE - 4000 psi, AIR ENTRAINED
2. REINFORCING STEEL - GRADE 60, ASTM A-615
- REINFORCING BASED ON PENNDOT RC-46M
3. WELDED WIRE FABRIC - ASTM-A185
4. LADDER RUNGS - COPOLYMER POLYPROPYLENE PLASTIC w/1/2" REBAR, GRADE 60 WHEN NEEDED
5. MATERIAL AND CONSTRUCTION SHALL COMPLY WITH PENNDOT PUB. 408, 72, & RC46M
6. LOCATIONS OF PIPE OPENINGS AS REQUIRED
7. ALL MATERIAL USED MADE IN THE USA

PLAN VIEW



ALTOMARE PRECAST, INC.
 4300 Wissahickon Ave.
 Philadelphia, PA 19129
 Ph: 215-225-8800 Fax: 215-225-8900

TITLE:
 PENNDOT Type 4 Box
 w/ 8" Walls, Deck,
 & 2'x4' Casting

PROJECT:
 CONTR:
 DATE: