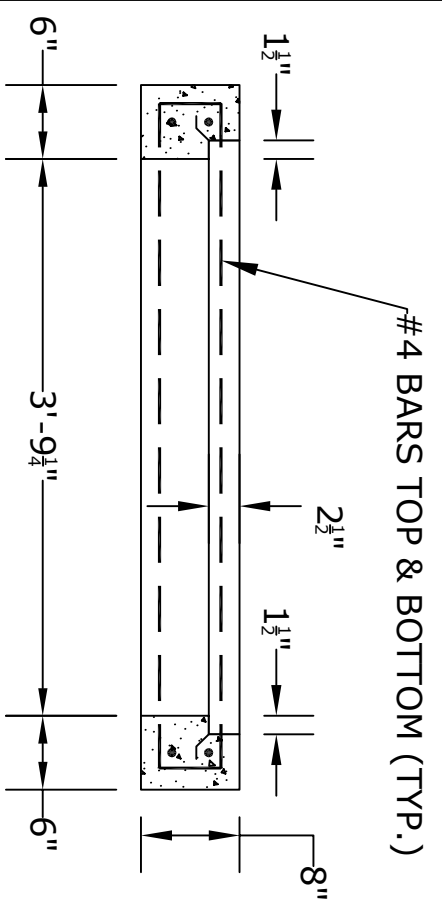
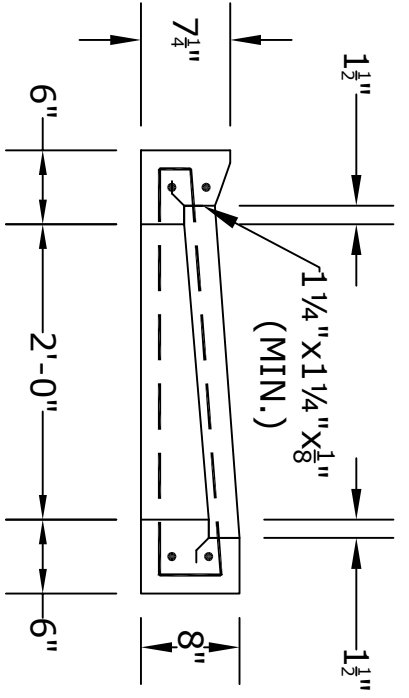


PLAN VIEW



SECTION A



SECTION B

- NOTES**
1. CONCRETE - 4000psi, AIR ENTRAINED
 2. REINFORCING STEEL - GRADE 60, ASTM A-615 MEETS PENN DOT RC-34 STANDARDS

ALTOMARE PRECAST, INC.
 4300 Wissahickon Ave.
 Philadelphia, PA 19129
 Ph: 215-225-8800 Fax: 215-225-8900

TITLE:
RC-34 "S" TOP

PROJECT:
CONTR:
DATE: