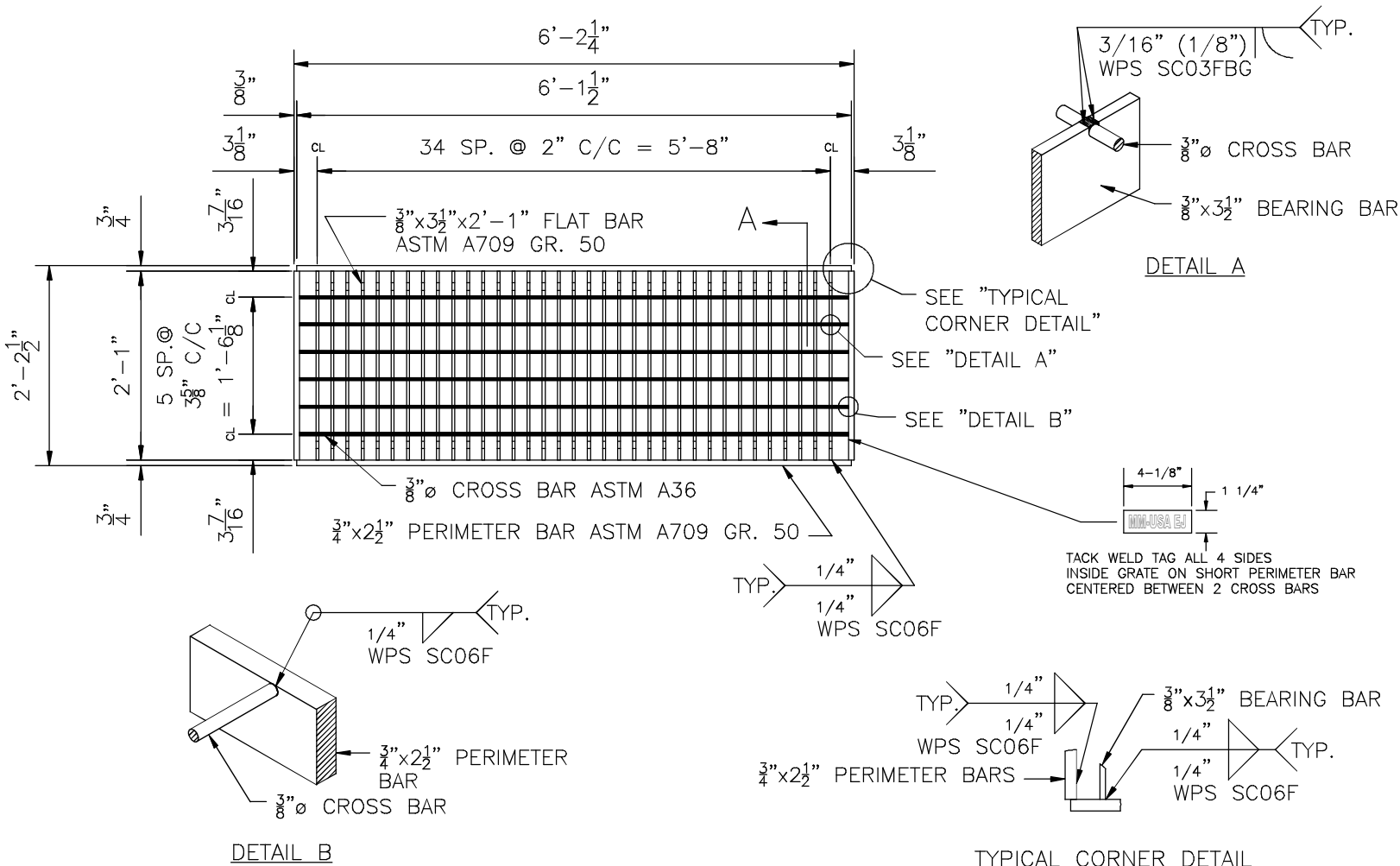


PENNDOT BIKE SAFE GRATE H25 - 2' x 6'



Product Number

PABIKEGR-N6

Design Features

- Materials
ASTM A709 GR 50 Except as Noted
- Design Load
H-25
- Open Area
N/A
- Coating
Painted Black
- √ Designates Machined Surface

Certification

- Weight: 427 Lbs.
-
-
- Country of Origin: USA

NOTES:

1. ALL BEARING BARS AND PERIMETER BARS SHALL CONFORM TO ASTM A709 GR. 50 (A572) STEEL.
2. ALL CROSS BARS SHALL BE LOCATED FLUSH ALONG THE TOP SURFACE OF THE GRATE.
3. ALL WELDING SHALL BE IN CONFORMANCE WITH THE REQUIREMENTS OF PUBLICATION 408, SECTION 1105.03(m).
4. COAT GRATES WITH AN APPROVED BITUMIOUS PAINT, IN ACCORDANCE WITH PUBLICATION 408, SECTION 605.2(f).
5. ENTIRE GRATE SHALL CONFORM TO THE REQUIREMENTS OF PENNSYLVANIA DOT STANDARD RC-45M.

Drawing Revision

05/05/2009 Designer: CJC
08/05/15 Revised By: JMM

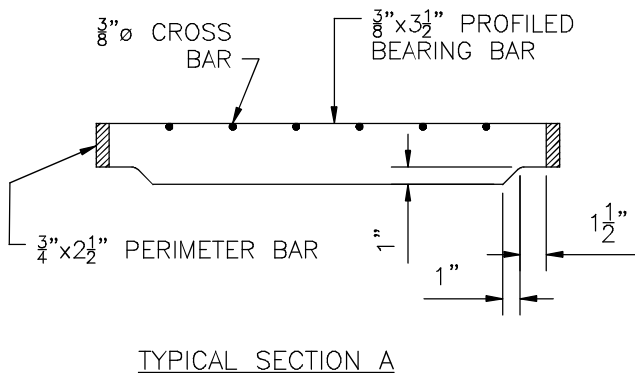
Disclaimer

Weights (lbs/kg), dimensions (inches/mm) and drawings provided for your guidance. We reserve the right to modify specifications without prior notice.

CONFIDENTIAL: This drawing is the property of EJ Group, Inc. and embodies confidential information, registered marks, patents, trade secret information, and/or know-how that is the property of EJ Group, Inc. Copyright © 2011 EJ Group, Inc. All rights reserved.

Contact

800 626 4653
ejco.com



TYPICAL SECTION A