



EJ  
301 Spring Street  
PO Box 439  
East Jordan, MI 49727-0439

+1 231 536 2261  
800 874 4100  
ejco.com

## Material Certification

May 26, 2017

Altomare Precast  
4300 Wissahicon  
Philadelphia, Pennsylvania 19129  
Attn: Phil Altomare  
Fax #:

**RE: Job Name: Pennsylvania DOT**  
Project #: PABIKEGRSC  
Order Type.: Submittal

<u>QUANTITY</u>	<u>DESCRIPTION</u>
1	PABIKEGRSC STL PA BIKE GRATE H20 STYLE

EJ certifies the PABIKEGRSC is designed for H-20 wheel loads per AASHTO H-20 "Standard Specifications For Highway Bridges" per section 3.27.3 Open Floors.

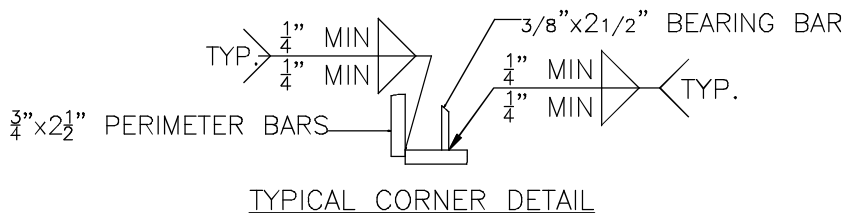
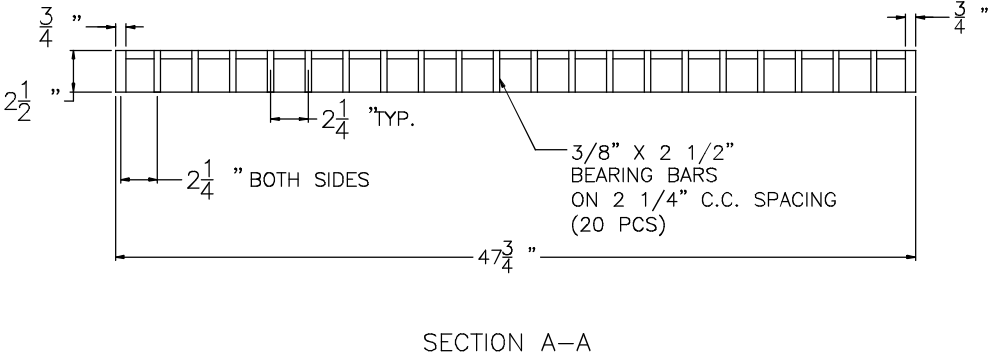
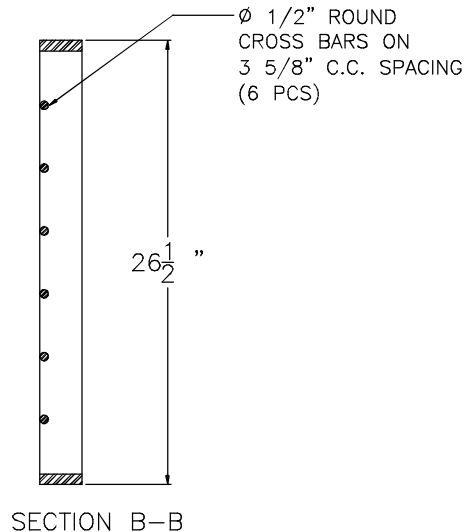
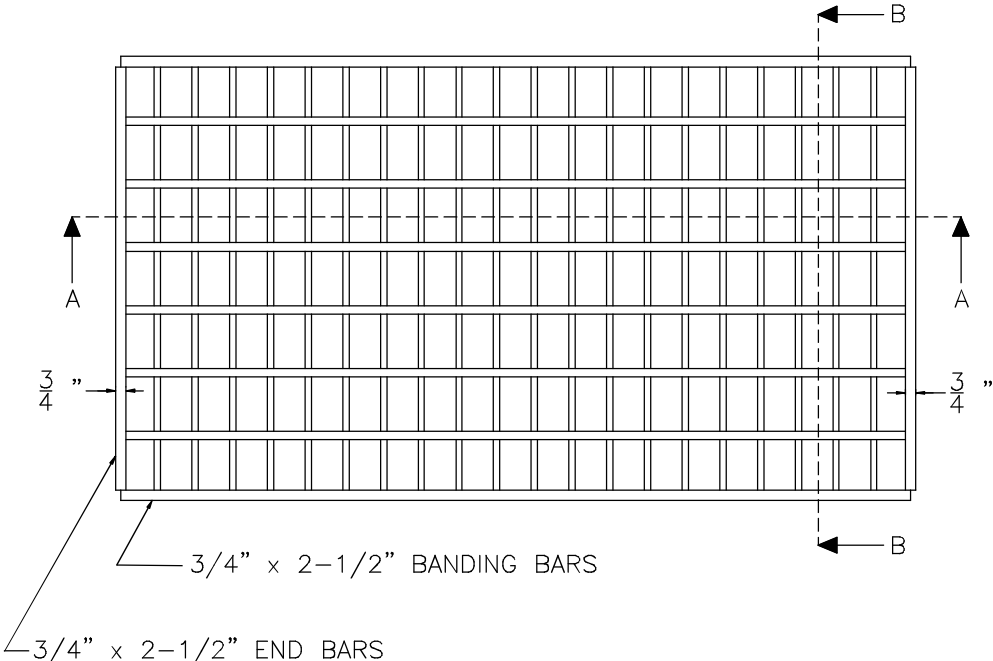
EJ also certifies that the steel used to make the fabrications for the construction project referenced above is in full compliance with ASTM A36 and ASTM A529 Gr 50 for all carbon steel structural shapes.

Products listed above are manufactured in the United States of America using domestic materials. Thank you for specifying and using products manufactured by EJ.

EJ USA, Inc.

John Murray, P.E.  
Engineering Manager

# Steel Bike Grate 26-1/2" X 47-3/4" Painted



- NOTES:
- 1.) ALL 3/8" x 2 1/2" BEARING BARS SHALL CONFORM TO ASTM-A529 GR.50 STEEL.
  - 2.) H-20 WHEEL LOADS PER AASHTO H-20 "STANDARD SPECIFICATIONS FOR HIGHWAY BRIDGES" PER SECTION 3.27.3 OPEN FLOORS. (SPAN ESTIMATED AT 24-1/2").
  - 3.) CROSS BARS SHALL CONFORM TO ASTM-A36.
  - 4.) ALL 5/8" x 2-1/2" BARS SHALL CONFORM TO ASTM A36.
  - 5.) ENTIRE GRATE SHALL BE PAINTED BLACK PER PENNDOT SPECIFICATIONS.

**Product Number**  
**PABIKEGRSC**

**Design Features**

- Materials See Notes
- Design Load See Notes
- Open Area 867 Sq. In.
- Coating Painted

**Certification**

- Est. Weight = 214 lbs
- Additional Certification
- Country of Origin: USA

**Drawing Revision**  
 10/08/04 Designer: CJC  
 09/17/2013 Revised By: MAW

**Disclaimer**  
 Weights (lbs/kg), dimensions (inches/mm) and drawings provided for your guidance. We reserve the right to modify specifications without prior notice.

CONFIDENTIAL: This drawing is the property of EJ Group, Inc. and embodies confidential information, registered marks, patents, trade secret information, and/or know-how that is the property of EJ Group, Inc. Copyright © 2011 EJ Group, Inc. All rights reserved.

**Contact**  
 800 626 4653  
 ejco.com