

PRODUCT NUMBER

PA22BKGR

CATALOG NUMBER

N/A

STEEL GRATE

LOAD RATING

HEAVY DUTY

COATING

PAINTED

ESTIMATED WEIGHT

GRATE: 125 LBS

MATERIAL SPECIFICATION

GRATE - STEEL
SEE NOTES

OPEN AREA

N/A

√ DESIGNATES MACHINE
SURFACE

DRAWN
CJC

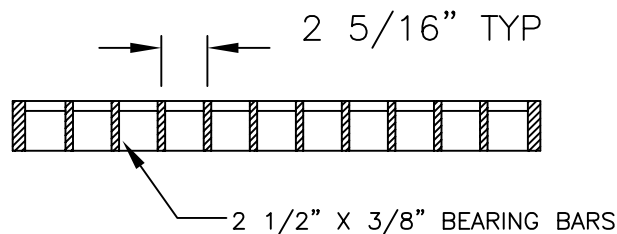
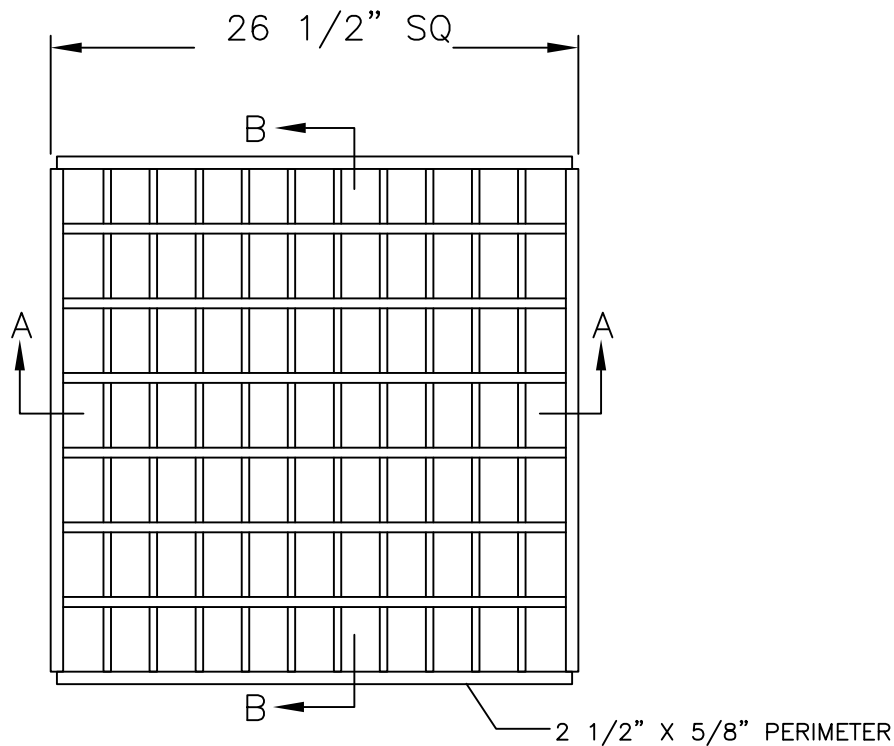
DATE
07/15/05

LAST REVISED
CJC

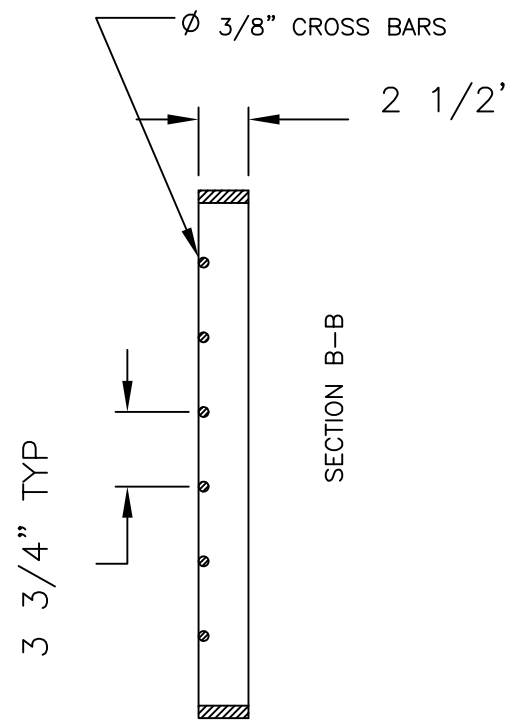
DATE
06/10/08

REFERENCE INFORMATION

OOXXXXXX



SECTION A-A



NOTES:

1.) BEARING BARS SHALL CONFORM TO A.S.T.M. A-36MOD STEEL (MIN. 50 K.P.S.I. YIELD).

2.) ALL OTHER MATERIAL SHALL CONFORM TO A.S.T.M. A-36.

3.) ENTIRE GRATE SHALL BE PAINTED BLACK PER PENNDOT SPECIFICATIONS.

4.) UNITS MANUFACTURED IN THE UNITED STATES.