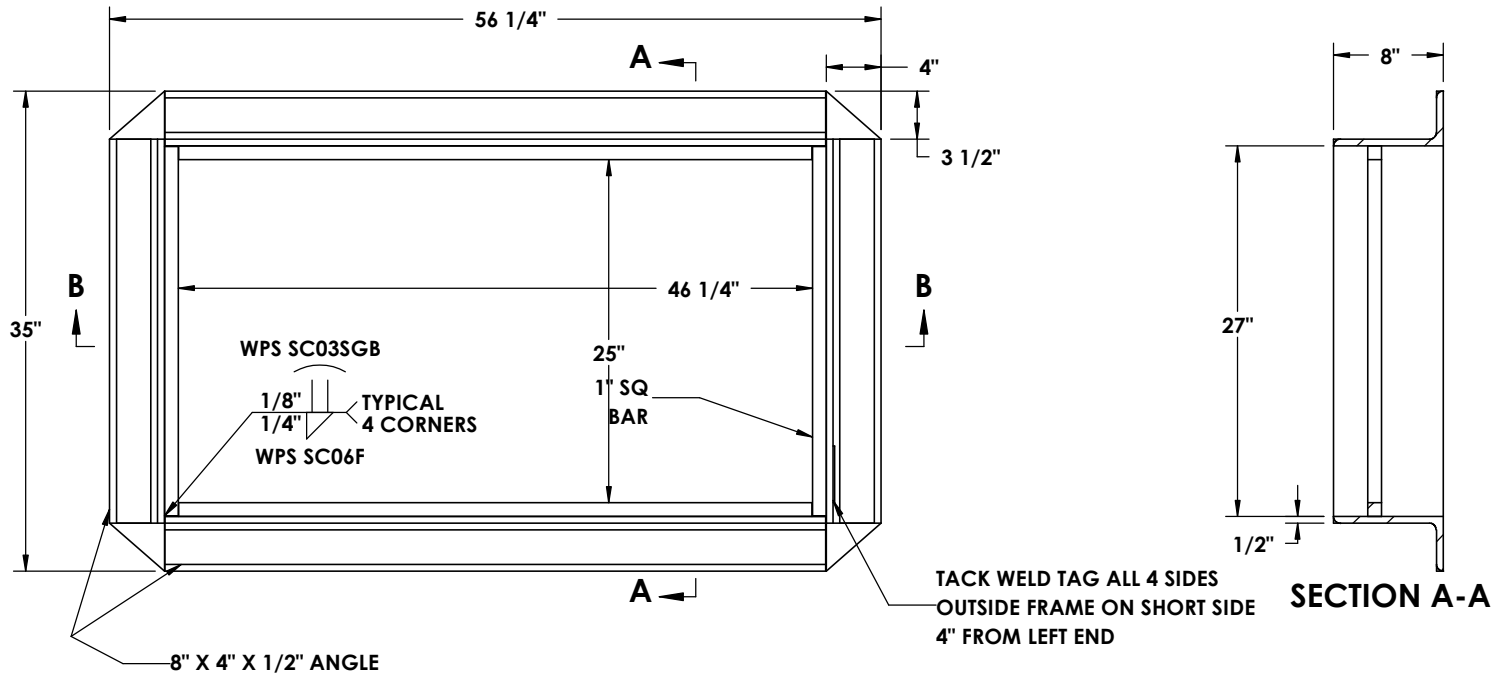


PennDot M-Frame 4 Flange



Product Number

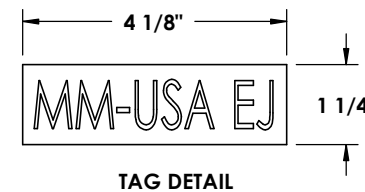
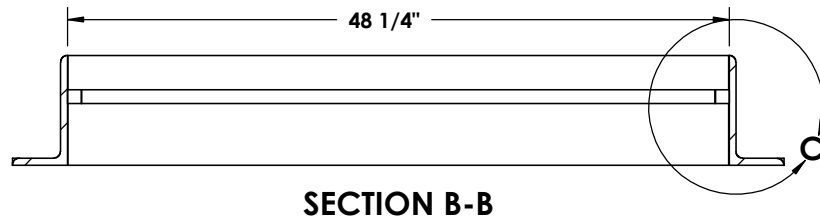
PACF4FLG

Design Features

- Materials
Steel-See Notes
- Design Load
H20 (PennDOT Design)
- Open Area
25" X 46-1/4"
- Coating
Dipped
- √ Designates Machined Surface

Reference Material

-
- Estimated Weight: 305 lbs
- Country of Origin: USA
- Revision Level:



Drawing Revision

10/29/2012 Designer: AWM
05/24/2021 Revised By: PJC

Disclaimer

Weights (lbs/kg), dimensions (inches/mm) and drawings provided for your guidance. We reserve the right to modify specifications without prior notice.

Quality is very important for EJ, and it includes compliance to measurements and features in this drawing. We are constantly looking at innovation with optimized designs and materials. Please check our website ejco.com for more information. Technical information contained in this drawing represents intellectual property of EJ. If you are using it in other documents please contact EJ, us.sales@ejco.com. Copyright © 2017 EJ GROUP, Inc. All rights reserved.

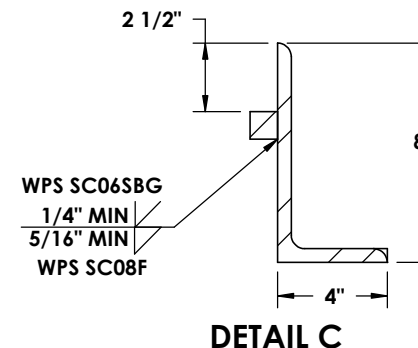
NOTES

MATERIAL SHALL BE HOT ROLLED STEEL CONFORMING TO ASTM A709 GRADE 50 (A572)

ALL WELDING SHALL BE IN CONFORMANCE WITH THE REQUIREMENTS OF PUBLICATION 408, SECTION 1105.03(m).

COAT FRAME WITH AN APPROVED BITUMENOUS PAINT, IN ACCORDANCE WITH PUBLICATION 408, SECTION 605.2(f).

AS AN ALTERNATE TO BITUMENOUS PAINT, GALVANIZE FRAME IN ACCORDANCE WITH PUBLICATION 408, SECTION 1105.02(s).



Contact

800 626 4653
ejco.com