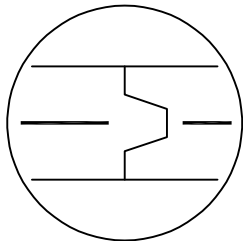
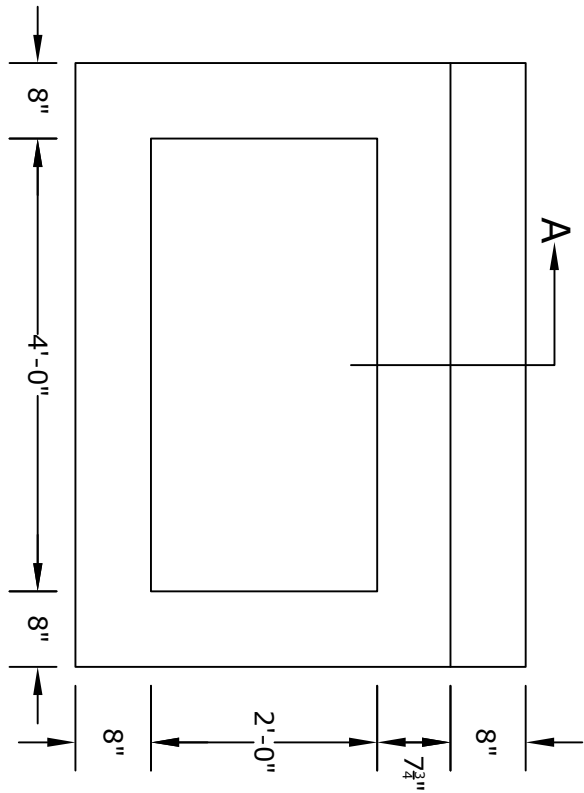


SECTION A

- NOTES**
1. CONCRETE - 4000 psi, AIR ENTRAINED
 2. REINFORCING STEEL - GRADE 60, ASTM A-615
 3. WELDED WIRE FABRIC - ASTM A-185, 4x4 W4&W4
 4. INLET COMPONENTS - SEE ACCOMPANYING SPEC. SHEETS
 5. FRAME AND COVER - SEE ACCOMPANYING SPEC. SHEET
 6. TRAP/ORIFICE CAN BE LOCATED ON ANY WALL
 7. ALL MATERIAL USED MADE IN THE USA



OPTIONAL JOINT
(WHEN NEEDED)



PLAN VIEW
(SHOWN WITHOUT TOP SLAB)

ALTOMARE PRECAST, INC.
4300 Wissahickon Ave.
Philadelphia, PA 19129
Ph: 215-225-8800 Fax: 215-225-8900

TITLE:
Philadelphia
4' City Inlet
w/ Orifice

PROJECT:
CONTR:
DATE: