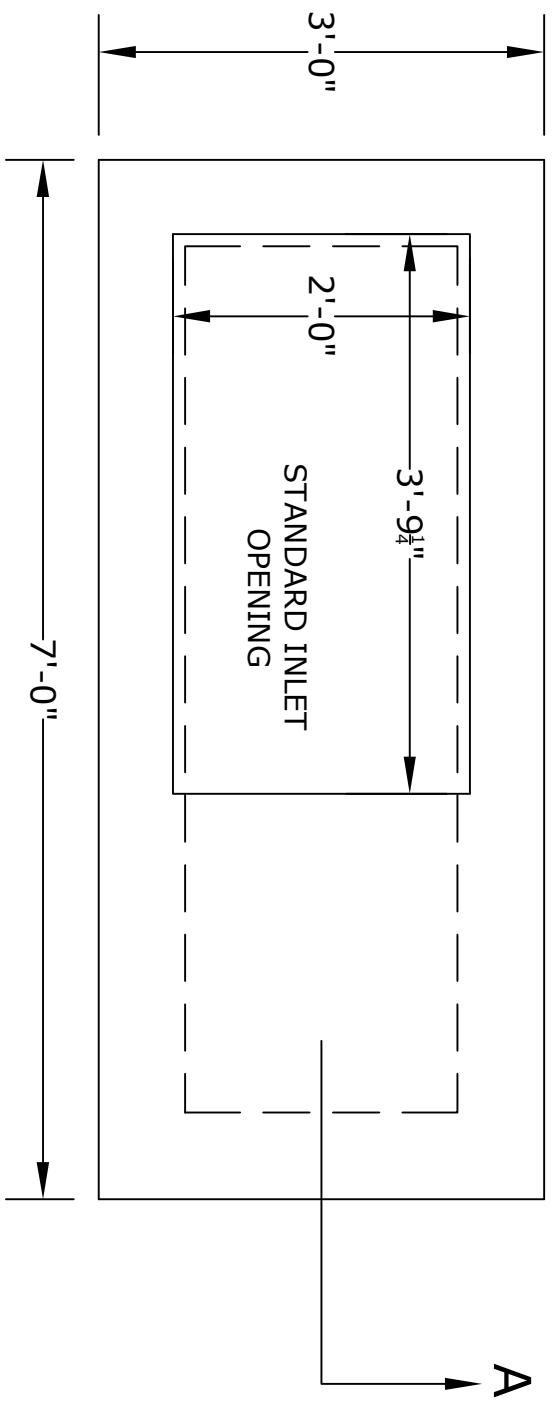
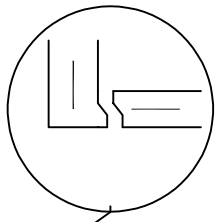


**NOTES**

1. CONCRETE- 4000psi, AIR ENTRAINED
2. REINFORCING STEEL- GRADE 60, ASTM A-615
3. FRAME AND COVER-  
SEE ACCOMPANYING SPEC. SHEET
4. ALL MATERIAL USED MADE IN THE USA

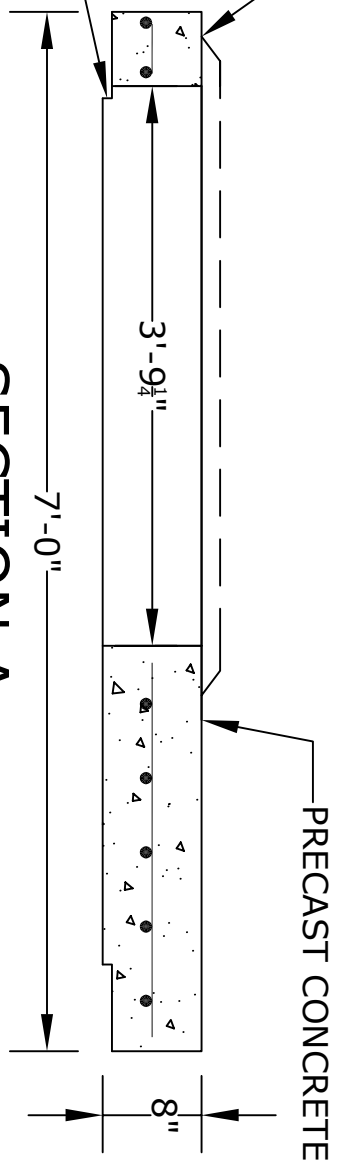


**PLAN VIEW**



**OPTIONAL JOINT  
(WHEN NEEDED)**

**TRANSITION SLAB  
THICKER IN MIDDLE  
TO LOCK INTO WALLS**



**SECTION A**

**ALTOMARE PRECAST, INC.**  
 4300 Wissahickon Ave.  
 Philadelphia, PA 19129  
 Ph: 215-225-8800 Fax: 215-225-8900

**TITLE:**  
**3x7 Capping Slab  
 w/ 2'X4' Hole**

PROJECT:
CONTR:
DATE: