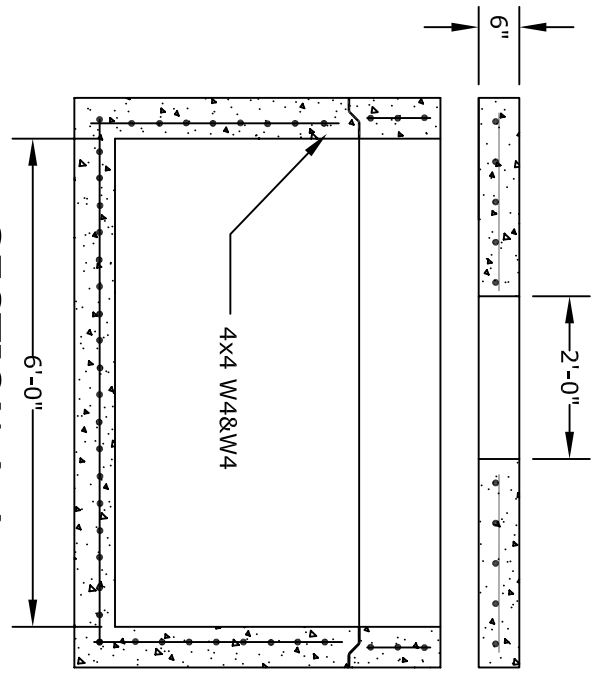
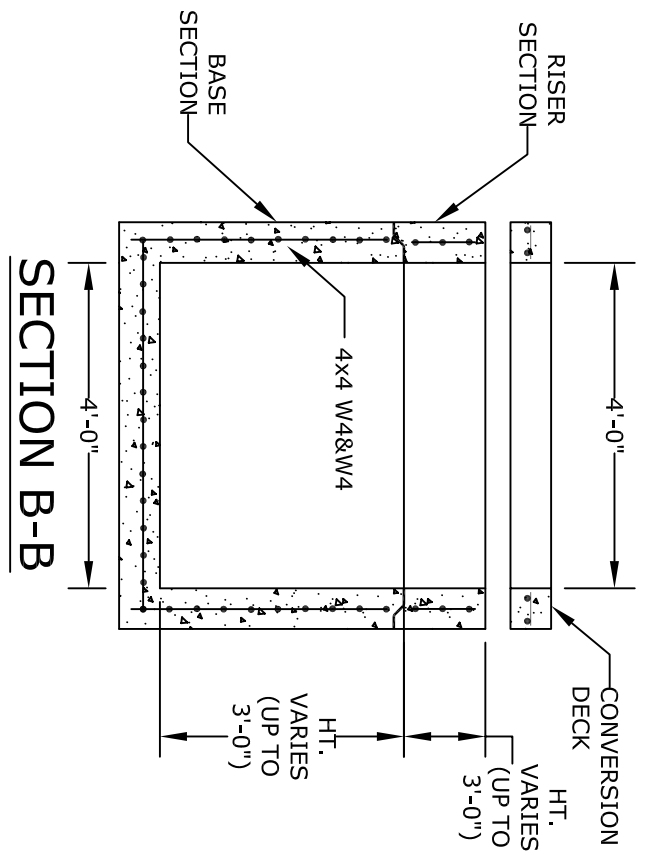


PLAN VIEW



SECTION A-A



SECTION B-B

NOTES

1. CONCRETE- 4000 psi, AIR ENTRAINED
2. -----INTENTIONALLY BLANK-----
3. WELDED WIRE FABRIC- 4X4 W48W4, ASTM-A185
4. LADDER RUNGS- COPOLYMER POLYPROPYLENE PLASTIC w/1/2" REBAR, GRADE 60 WHEN NEEDED

ALTOMARE PRECAST, INC.
 4300 Wissahickon Ave.
 Philadelphia, PA 19129
 Ph: 215-225-8800 Fax: 215-225-8900

TITLE:
**PennDot Type 3
 Inlet**

PROJECT:
CONTR:
DATE: