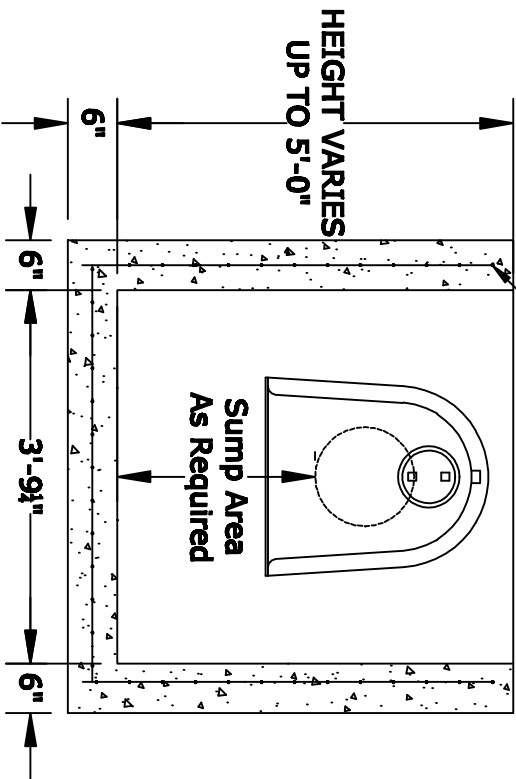


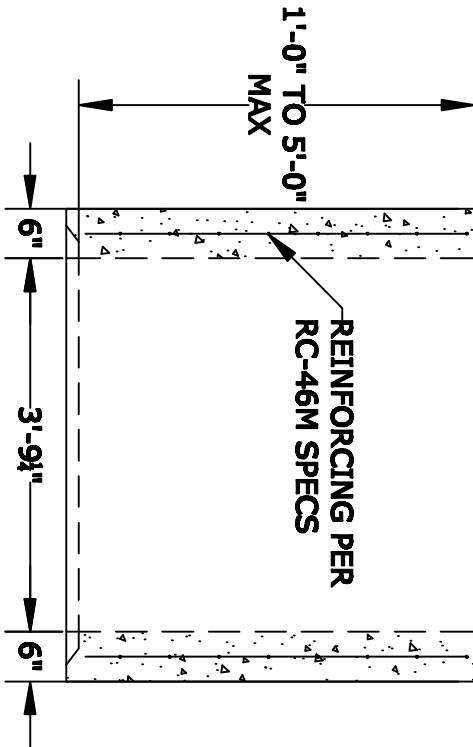
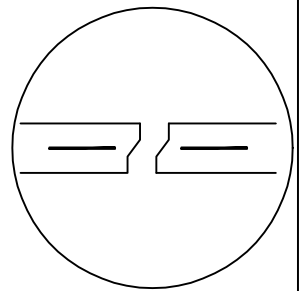
PLAN VIEW

REINFORCING PER RC-46M SPECS



BOX, SECTION A-A

**JOINT DETAIL
(WHEN NEEDED)**



RISER, SECTION A-A

(TOP JOINT MAY BE PRESENT)

NOTES

1. CONCRETE- 4000 psi, AIR ENTRAINED
2. REINFORCING STEEL- GRADE 60, ASTM A-615
- REINFORCING BASED ON PENNDOT RC-46M
3. WELDED WIRE FABRIC- ASTM-A185
4. LADDER RUNGS- COPOLYMER POLYPROPYLENE PLASTIC w/1/2" REBAR, GRADE 60 WHEN NEEDED
5. MATERIAL AND CONSTRUCTION SHALL COMPLY WITH PENNDOT PUB. 408, 72, & RC46M
6. LOCATIONS OF PIPE OPENINGS AS REQUIRED
7. ALL MATERIAL USED MADE IN THE USA
8. TRAP PROVIDED BY ALTOMARE INSTALLED IN THE FIELD BY OTHERS.

ALTOMARE PRECAST, INC.
4300 Wissahickon Ave.
Philadelphia, PA 19129
Ph: 215-225-8900 Fax: 215-225-8900

TITLE:
Inlet Box w/ TRAP