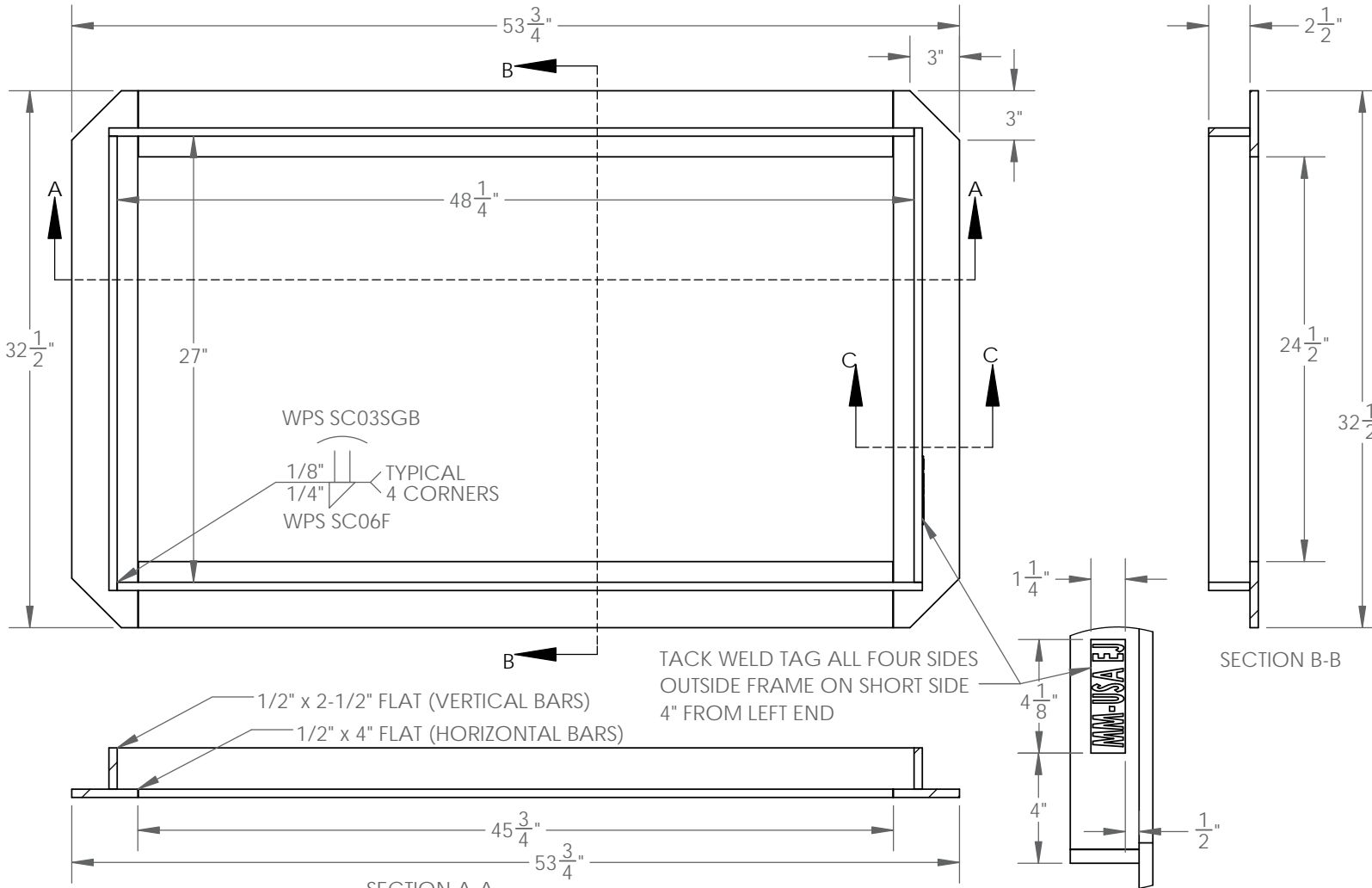


Pennsylvania DOT M Frame



Product Number

PAMF

Design Features

- Materials
SEE NOTES
- Design Load
PER RC-45M
- Coating
BITUMINOUS

-√ Designates Machined Surface

Reference Material

WEIGHT: 142 LBS.
Country of Origin: USA

Drawing Revision

3/1/2017	Designer: ARO
06/14/17	ARO

Disclaimer

Weights (lbs/kg), dimensions (inches/mm) and drawings provided for your guidance. We reserve the right to modify specifications without prior notice.

CONFIDENTIAL: This drawing is the property of EJ GROUP, Inc., and embodies confidential information, registered marks, patents, trade secret information, and/or know how that is the property of EJ GROUP, Inc. Copyright © 2011 EJ GROUP, Inc. All rights reserved.

Contact

800 626 4653
ejco.com

NOTES:

- 1.) ALL MATERIAL SHALL BE HOT ROLLED STEEL CONFORMING TO THE REQUIREMENTS OF ASTM A709 GR36 (A36).
- 2.) ALL WELDING SHALL BE IN CONFORMANCE WITH THE REQUIREMENTS OF PUBLICATION 408, SECTION 1105.03(m).
- 3.) COAT FRAMES WITH AN APPROVED BITUMINOUS PAINT, IN ACCORDANCE WITH PUBLICATION 408, SECTION 605.2(f).
- 4.) ENTIRE FRAME SHALL CONFORM TO THE REQUIRMENTS OF PENNSYLVANIA DOT STANDARD RC-45M.

